

# Appendix B – Public Engagement Report



**Gladstone Area  
Water Board**

## MEDIA RELEASES



## Gladstone Area Water Board

ABN: 88 409 667 181  
Service Provider: 200

PO Box 466  
GLADSTONE Q 4680

2nd Floor  
147 Goondoon Street  
GLADSTONE Q 4680

Tel: (07) 4976 3000  
Fax: (07) 4972 5632

Email:  
[gawb@gawb.qld.gov.au](mailto:gawb@gawb.qld.gov.au)  
Web:  
[www.gawb.qld.gov.au](http://www.gawb.qld.gov.au)



## MEDIA RELEASE

30 May 2007

### INVESTIGATIONS COMMENCE ON GAWB'S GLADSTONE - FITZROY PIPELINE

The Gladstone Area Water Board (GAWB) today announced the commencement of technical investigations on the proposed Gladstone – Fitzroy Pipeline.

The Gladstone – Fitzroy Pipeline will connect the Fitzroy River with GAWB's raw water supply network via an underground pipeline approximately 110 kilometres in length, linking two major sources of water for the region.

The Gladstone – Fitzroy Pipeline is a key outcome from the 2006 Central Queensland Regional Water Supply Strategy, a strategy developed by the State Government with co-operation from local councils, regional water supply bodies and other local stakeholders.

The Strategy reserved up to 30,000 ML per year of water from the Fitzroy River to augment the region's water supply from Awoonga Dam. The water would be made available by new pipeline infrastructure from the Fitzroy River.

While Gladstone has sufficient water for the short term, low inflows to Awoonga Dam since 2003's drought-breaking Cyclone Beni and strong industrial growth have signalled a need to pursue a second source of water to secure a reliable, long-term water supply for the region.

GAWB's chief executive officer, Mr Jim Grayson, said the organisation is keen to progress its planning on the Gladstone – Fitzroy Pipeline by undertaking initial technical investigations.

"If we don't act until we are in a crisis situation it will be too late, as it can take years to plan, design and gain the appropriate approvals for the project, let alone to construct the pipeline," Mr Grayson said.

"By moving forward with the approval process, we are putting ourselves in a position where we can construct the pipeline in around two years - by no later than 2011 if current rainfall and industrial growth trends continue.

"GAWB's own Strategic Water Plan that was finalised in November 2004 also recommended the pipeline as the preferred option for securing water supplies in the region."

Other supply methods such as desalination, new dams and weirs, and further industrial demand management were also considered by GAWB, but the combined social, environmental and economic benefits were highest for the pipeline option.

“Local industry and residents have achieved significant water savings since 2000, through managing household usage and the use of recycled water in relevant industrial applications,” Mr Grayson said.

“Even with approximately 11 percent population growth in the region, municipal water use has not increased from 2001 levels, a trend we hope to see continue well into the future.

“We strongly encourage people to keep valuing water as a scarce resource as they have been doing for several years now, however, with rainfall still declining and industry considering new proposals which would bring significant benefit to the region, GAWB needs to plan ahead to ensure a reliable water source for the future.”

It is likely that the Gladstone – Fitzroy Pipeline will run through the proposed Stanwell – Gladstone Infrastructure Corridor (SGIC), which is currently under investigation by the Department of Infrastructure. While the SGIC has not yet been declared by the State Government, the proposal has been in consultation since 2006.

At the northern end, commencing at the Fitzroy River, GAWB will be seeking easements to connect with the SGIC and will examine the use of existing corridors and easements where possible. At the southern end, the pipeline will continue through the Gladstone State Development Area (GSDA) to connect with GAWB's existing water infrastructure.

“We will undertake technical, environmental and cultural heritage investigations and gather feedback from the community from mid 2007 to determine a corridor for the pipeline before completing an Environmental Impact Statement for the preferred pipeline corridor in late 2007,” Mr Grayson said.

For more information about GAWB's Gladstone – Fitzroy Pipeline, visit [www.gladstone-fitzroypipeline.com.au](http://www.gladstone-fitzroypipeline.com.au) or phone 1800 771 187.

-ENDS-

**For more information contact**

Jim Grayson  
CEO, Gladstone Area Water Board  
p: 4976 3000

Marissa Brazier  
Gladstone-Fitzroy Pipeline Project Team  
p: 1800 771 185



**Deputy Premier, Treasurer and Minister for Infrastructure The Honourable Anna Bligh**

**Thursday, August 30, 2007**

**HAVE YOUR SAY ON GLADSTONE – FITZROY PIPELINE PROJECT**

August 30, 2007

The Beattie Government has taken another step in fulfilling its commitment to drought-proof regional Queensland by giving the public the chance to have their say on the environmental, economic and social impact of the proposed \$345 million Gladstone - Fitzroy Pipeline Project.

Deputy Premier and Minister for Infrastructure Anna Bligh today announced the Coordinator-General, Ken Smith, had released the draft terms of reference for the Environmental Impact Statement (EIS) process into the proposed pipeline. The Gladstone Area Water Board plans to build a 110km water pipeline to transfer 30,000 million litres (30 gigalitres) of water a year from the lower Fitzroy River to the Gladstone State Development Area.

“This project is of regional, state and national economic significance because it will allow the Gladstone region to continue to attract major industries and to enjoy the confidence of having secure water supply,” Ms Bligh said.

The pipeline, should it proceed, is likely to be the first project to run within the proposed Stanwell – Gladstone Infrastructure Corridor, which will also aid existing and future industries and businesses in the region by providing an underground route for gas and slurry pipelines, and telecommunications cables.

The water pipeline is likely to use the corridor for most of its length and then connect with existing Gladstone water infrastructure within the Gladstone State Development Area.

“Other infrastructure associated with the project include the intake point in the Fitzroy River, a water treatment plant, three pump stations along the pipeline and storages,” Ms Bligh said.

GAWB estimates the project will cost approximately \$345 million and that about 300 jobs will be created during its construction and 10 jobs during operation.

GAWB currently relies on the Awoonga Dam as its sole source of water.

With the expanding industrial area and the continuing drought conditions, there is a growing need to provide a reliable supply of water for growth of current consumers and future demands.

The Coordinator-General declared the proposed Gladstone - Fitzroy Pipeline Project, to be a significant project under the State Development and Public Works Organisation Act 1971 in July 2007.

“A period of public consultation on the draft terms of reference will continue for 4 weeks to enable the public to have their say on matters to be addressed in the EIS,” Ms Bligh said. “We want to make a considered decision, one that takes in community, environmental and social impacts.”

Media contact: Deputy Premier's Office 3224 6900

## **Media Release**

**8 October 2007**

### **Gladstone Area Water Board Releases Revised Drought Management Plan**

The Gladstone Area Water Board (GAWB) today released its revised Drought Management Plan.

The revision of the Drought Management Plan is an outcome of GAWB revisiting the way it calculates its annual inflow assumptions for Awoonga Dam.

As a bulk supplier of water GAWB does not directly provide water to residential users, rather GAWB supplies to both Gladstone City Council and Calliope Shire Council which in turn supply residential users. Councils are currently reviewing their Drought Management Plans, in light of the changes made by GAWB.

GAWB's Chief Executive Officer, Mr Jim Grayson, said revising the Drought Management Plan on a regular basis is vital to ensure inflow assumptions are an accurate reflection of the current inflow situation and the system's capacity to supply water to the region.

"Previous inflow assumptions were based on the average of the ten worst consecutive inflow years on record, which gave a 'worst case' inflow of 69,243 megalitres per annum," Mr Grayson said.

"Since 2004, average inflows into the dam have been around two thirds lower than this forecast worst case scenario.

"The reduction in rainfall in the region may be temporary or may be reflective of more permanent climate change, there is no definitive explanation.

"Inflow assumptions in the revised Drought Management Plan are now based on the annual average of the most recent worst three year inflow sequence, which is currently 2004-2007, giving a revised inflow assumption of 23,633 megalitres per annum."

GAWB will review this 'worst case' three year sequence following the 2007/08 wet season, as it is possible that a further year of very low rainfall will lead to the years 2005-08 being the new worst three year period.

Current rainfall predictions for the coming wet season from the Queensland Climate Change Centre of Excellence SPOTA-1 Seasonal Rainfall Forecast Model are indicating a return to historic average rainfall for the 2007/2008 season, with extreme dry or wet conditions unlikely.

Should this forecast prove accurate, it would result in a much improved "wet season" from that experienced in the Gladstone region over recent years.

The process that GAWB uses to identify the occurrence of drought and the actions that will be triggered to reduce the consequences of this are outlined in GAWB's Drought Management Plan.

"GAWB's preferred approach to dealing with drought is to focus on supply augmentation rather than imposing water restrictions. Mr Grayson said

"Water restrictions are necessary when you have run out of options, but by forward planning to secure an additional, reliable water source, we are working towards implementing alternatives for the region.

“With the revised inflow assumptions, we are facing a situation where, if we don’t proactively seek additional water supply options, there is the possibility of running out of water by 2011.”

GAWB’s Gladstone-Fitzroy Pipeline project is a key element of its drought response. The Gladstone – Fitzroy Pipeline will connect the Fitzroy River with GAWB’s raw water supply network via an underground pipeline approximately 115 kilometres in length, bringing 30,000 megalitres of water to the region each year.

“Once the pipeline is operational, the water from the Fitzroy River will be more than the current worst annual inflow assumption,” Mr Grayson said.

“This will add surety to GAWB’s supply network, significantly reducing the likelihood of water restrictions and the possibility of supply failure.

“We are currently working towards gaining approval for the Gladstone-Fitzroy Pipeline project so that we can commence construction of the pipeline if it is triggered as a drought response.”

GAWB will undertake an Environmental Impact Statement for the Gladstone-Fitzroy Pipeline project during 2007/08. If current inflow trends continue in the region, construction of the Gladstone-Fitzroy Pipeline could be triggered as early as mid 2008.

GAWB’s revised Drought Management Plan can be viewed online at [www.gawb.qld.gov.au](http://www.gawb.qld.gov.au).

For more information about the Gladstone-Fitzroy Pipeline project, visit [www.gladstone-fitzroypipeline.com.au](http://www.gladstone-fitzroypipeline.com.au) or phone 1800 771 185.

-Ends-

For more information:

Jim Grayson  
**Chief Executive Officer, Gladstone Area Water Board**  
**Ph: 4976 3000**

Marissa Brazier  
**Gladstone-Fitzroy Pipeline Project Team**  
**1800 771 185**



## Gladstone Area Water Board

ABN: 88 409 667 181  
Service Provider: 200

PO Box 466  
GLADSTONE Q 4680

2nd Floor  
147 Goondoon Street  
GLADSTONE Q 4680

Tel: (07) 4976 3000  
Fax: (07) 4972 5632

Email:  
[gawb@gawb.qld.gov.au](mailto:gawb@gawb.qld.gov.au)  
Web:  
[www.gawb.qld.gov.au](http://www.gawb.qld.gov.au)



## MEDIA RELEASE

7 July 2008

### \$10 MILLION TO PREPARE FOR GLADSTONE-FITZROY PIPELINE

Gladstone Area Water Board (GAWB) and the Australian Government have signed a funding agreement to contribute \$20 million to the Gladstone-Fitzroy Pipeline project (the project). As part of this agreement GAWB has received an initial \$10 million to assist with the costs associated with undertaking preparatory works for the project.

As part of the Australian Government's *Water for the Future, National Water Security Plan for Cities and Towns*, GAWB has received the funding to ensure it can respond to the water needs of the region in a suitable timeframe when additional water is required.

While State and Local Governments are responsible for delivering water services to households, businesses and farms, *Water for the Future* is the Australian Government's overarching strategy to secure the long-term water supply of all Australians.

GAWB's CEO, Mr Jim Grayson, said the funding would substantially assist with the project's preparatory works, which are an integral part of GAWB's Contingent Supply Strategy (CSS). These works comprise total expenditure in the order of \$25 million.

"The CSS seeks to position GAWB so that it can efficiently respond to drought or an increase in the demand for water within the region," Mr Grayson said.

"While rain in early 2008 took the pressure off by adding around two years additional supply to Awoonga Dam, the trend in recent years is for low inflows into the dam so the need for additional water to mitigate drought in the future is a real possibility."

"The uncertain nature and sizeable requirements of new industrial projects for water is another reason why GAWB must prepare to access additional water supplies as it cannot supply more water than it is allocated from Awoonga Dam each year."

With multiple industrial projects being actively considered in the region, GAWB may be required to provide water to new projects above its current Awoonga Dam allocation within a relatively short time period if they are approved.

Mr Grayson said it was GAWB's goal to attain and hold the ability to have the Gladstone-Fitzroy Pipeline operational within two years from the decision commence its construction.

"By preparing for the project now, by designing the pipeline and acquiring relevant environmental approvals, GAWB is increasing the certainty that the pipeline will be operational within two years of its construction start date."

"The pipeline will only be built when it is triggered by either drought or increased demand for water as GAWB must ensure its expenditure is prudent, as all costs are ultimately recovered from all of its customers."

The pipeline is a key outcome from the 2006 Central Queensland Regional Water Supply Strategy (CQRWSS), a strategy developed by the State Government with co-operation from local councils, regional water supply bodies and other local stakeholders.

The CQRWSS reserved up to 30,000 ML per year of water from the Fitzroy River to augment the region's water supply and endorsed new pipeline infrastructure from the Fitzroy River as a long-term regional solution.

The Gladstone-Fitzroy Pipeline will connect the Fitzroy River with GAWB's raw water supply network via an underground pipeline approximately 115 kilometres in length.

The Gladstone-Fitzroy Pipeline will run through the recently declared Stanwell-Gladstone Infrastructure Corridor (SGIC). Commencing at the Fitzroy River, GAWB will be seeking easements to connect with SGIC. At the southern end, the proposed pipeline will continue through the Gladstone State Development Area (GSDA) to connect with GAWB's existing water infrastructure.

For more information about GAWB's Gladstone-Fitzroy Pipeline, visit [www.gladstone-fitzroypipeline.com.au](http://www.gladstone-fitzroypipeline.com.au) or phone 1800 771 187.

-ENDS-

**For more information contact**

Jim Grayson  
CEO, Gladstone Area Water Board  
Ph: 4976 3000

Marissa Brazier  
Gladstone-Fitzroy Pipeline Project Team  
Ph: 1800 771 185

## ADVERTISEMENTS

# SECURING THE REGION'S Water Supply

Gladstone Area Water Board (GAWB) has commenced technical investigations on its Gladstone – Fitzroy Pipeline to ensure a reliable supply of water for its existing and future customers.

The Gladstone – Fitzroy Pipeline is a key outcome from the 2006 Central Queensland Regional Water Supply Strategy, a strategy developed by the State Government with co-operation from local councils, regional water supply bodies and other local stakeholders.

Up to 30,000ML of water each year will be drawn from the Fitzroy River to provide a dual water source for GAWB's supply network.

The pipeline will run underground from the Fitzroy River via an easement and will likely connect to the proposed Stanwell – Gladstone Infrastructure Corridor, which is currently under investigation by the State Government. The pipeline will continue through the Gladstone State Development Area, before finally joining GAWB's raw water reticulation system.



*GAWB's current  
sole water source,  
Awoonga Dam*

For more information about GAWB's Gladstone – Fitzroy Pipeline, visit **[www.gladstone-fitzroypipeline.com.au](http://www.gladstone-fitzroypipeline.com.au)** or **phone 1800 771 185**.

To view the Central Queensland Regional Water Supply Strategy visit **[www.cqwaterstrategy.qld.gov.au](http://www.cqwaterstrategy.qld.gov.au)**.



**Gladstone Area  
Water Board**

# Gladstone-Fitzroy Pipeline Update

Gladstone Area Water Board (GAWB) commenced planning on its Gladstone-Fitzroy Pipeline project in 2006, to ensure a reliable supply of water for the region. Up to 30,000ML of water each year could be drawn from the Fitzroy River to provide a dual water source for GAWB's supply network.

By preparing for the Gladstone-Fitzroy Pipeline now - locating a preferred corridor, designing

the pipeline and gaining the necessary Government approvals, GAWB will be ready to commence construction of the pipeline as soon as low dam levels or increased demand trigger the need to start construction.

Additional information regarding above ground infrastructure for the pipeline and the anticipated project timeline is now available on the project website.

**Get your copy of the latest Gladstone-Fitzroy Pipeline project update:**

**Web:** [www.gladstone-fitzroypipeline.com.au](http://www.gladstone-fitzroypipeline.com.au)

**Phone:** 1800 771 185



**Gladstone Area  
Water Board**



# Gladstone-Fitzroy Pipeline Update

Despite recent rainfall, the Gladstone Area Water Board (GAWB) is progressing with environmental approvals and design of the Gladstone-Fitzroy Pipeline project to ensure the pipeline can be built within a two-year timeframe when it is required.

While the Gladstone region has sufficient water for the short-term – with 190,000 megalitres flowing into Awoonga Dam from

recent rainfall – consistently low inflows during the past ten years and strong industrial growth in the region have signalled the need for a second source of water to ensure reliable, long-term supply to the region.

The Gladstone-Fitzroy Pipeline project is part of GAWB's contingency plan to ensure a reliable supply of water for the Gladstone region now and into the future.

**Get your copy of the latest Gladstone-Fitzroy Pipeline project update:**

**Web:** [www.gladstone-fitzroypipeline.com.au](http://www.gladstone-fitzroypipeline.com.au)

**Phone:** 1800 771 185



**Gladstone Area  
Water Board**

# NEWSLETTERS

# GLADSTONE – FITZROY PIPELINE PROJECT



## project overview



## Gladstone – Fitzroy Pipeline Project

Gladstone Area Water Board (GAWB) has commenced technical investigations on the proposed Gladstone-Fitzroy Pipeline project to ensure a reliable supply of water for the region. Up to 30,000ML of water each year will be drawn from the Fitzroy River to provide a dual water source for GAWB's supply network.

The pipeline will run underground from the Fitzroy River via an easement, through the proposed Stanwell – Gladstone Infrastructure Corridor (SGIC) and Gladstone State Development Area (GSDA), before finally joining GAWB's raw water reticulation system.

The Gladstone – Fitzroy Pipeline is a key outcome from the 2006 Central Queensland Regional Water Supply Strategy, a strategy developed by the State Government with co-operation from local councils, regional water supply bodies and other local stakeholders.

## Securing the Region's Water Supply

While the Gladstone region has sufficient water for the short-term, low inflows to Awoonga Dam since 2003's drought-breaking Cyclone Beni and strong industrial growth have signalled a need to pursue a second source of water to secure a reliable, long-term water supply for the region.

By preparing for the Gladstone-Fitzroy Pipeline now - locating a preferred corridor, designing the pipeline and gaining appropriate Government approvals, GAWB will be ready to commence construction of the pipeline as soon as low dam levels or increased demand trigger the need to start construction.

## About the Gladstone Area Water Board

On 1 October 2000 GAWB commenced operations as a Category 1 commercialised Water Authority under the Water Act 2000 and is responsible to the Minister for Natural Resources and Water. GAWB supplies water directly to large industrial customers, including the Gladstone City Council and the Calliope Shire Council. These Councils then distribute water directly to their ratepayers.

GAWB's primary focus is to supply its customers through commercially responsive and environmentally sustainable business practices. This is achieved through planning, operating and maintaining the infrastructure required to supply water in a sustainable manner, while minimising the impact of its operations on the environment.



# The Central Queensland Regional Water Supply Strategy



The Central Queensland Regional Water Supply Strategy was initiated in response to prolonged severe drought in Central Queensland, from which it became evident that a regional, whole-of-government approach was the most efficient way of meeting the water supply challenges.

The strategy is an adaptive, long-term statement, outlining equitable and timely solutions to the urban, industrial/mining and agricultural water needs of the

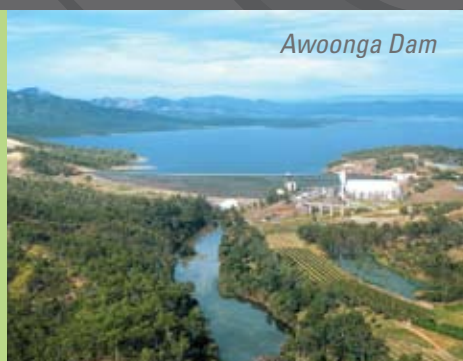
Central Queensland region. Through a tailored, regional approach, the strategy has been designed to achieve optimal social, environmental and economic outcomes for the region.

The strategy area, covering 153,000 square kilometres, includes Queensland's Fitzroy River Basin and the coastal streams of the Capricorn Coast and the Gladstone region. 🐾

## Why doesn't GAWB just impose water restrictions?

Residents in Gladstone reduced their water use during the last drought, and have not significantly increased it since. Rockhampton, similarly, significantly reduced its water use with the introduction of metering. GAWB encourages water conservation by both residents and industry, and is encouraged by the efficient use of water already being achieved in the region.

However, GAWB believes that heavy restrictions should only be imposed as a last resort, and instead, suitable forward planning should be conducted to ensure water is available for the health and prosperity of the region. 🐾



Awoonga Dam

## GAWB Strategic Water Strategy

GAWB's Strategic Water Plan (2004) looked at the full range of possible options, from desalination, to demand management, to new dams and weirs. The Gladstone-Fitzroy Pipeline was identified as the preferred option, taking into consideration environmental and social impacts, reliability and quality of supply, and cost. 🐾

## FAST FACTS

- 🐾 The Gladstone-Fitzroy Pipeline will be approximately 110km long.
- 🐾 It will be an underground pipeline linking the Fitzroy River to GAWB's pipeline network in Gladstone.
- 🐾 Once a decision has been made to proceed with the pipeline, the earliest date for completion of the project is by 2011.
- 🐾 Around 80% of GAWB's water supply is to industry in the region.
- 🐾 The remaining 20% of GAWB's water supply goes to local councils who then supply their residents.
- 🐾 Awoonga Dam is the 4th largest Dam in Queensland with a maximum capacity of 770,000 ML.



## Community Involvement in the Gladstone-Fitzroy Pipeline project

GAWB is committed to working with the community to determine the preferred location for the Gladstone-Fitzroy Pipeline.

For more information about GAWB's Gladstone-Fitzroy Pipeline project, visit [www.gladstone-fitzroypipeline.com.au](http://www.gladstone-fitzroypipeline.com.au) or phone **1800 771 185**.

To view the Central Queensland Regional Water Supply Strategy visit [www.cqwaterstrategy.qld.gov.au](http://www.cqwaterstrategy.qld.gov.au). 🐾



# GLADSTONE – FITZROY PIPELINE PROJECT



## project update

December 2007

### PROJECT BACKGROUND

Gladstone Area Water Board (GAWB) commenced planning on the Gladstone-Fitzroy Pipeline project in 2006, to ensure a reliable supply of bulk water for the region. Up to 30,000 megalitres (ML) of water each year could be drawn from the Fitzroy River via the project, to provide a dual water source for GAWB's supply network.

While the Gladstone region has sufficient water for the short-term, low inflows to Awoonga Dam since 2003's drought-breaking Cyclone Beni and strong industrial growth have signalled a need to pursue a second source of water to secure a reliable, long-term water supply for the region.

By preparing for the Gladstone-Fitzroy Pipeline now – locating a preferred corridor, designing the pipeline and gaining the necessary government approvals, GAWB will be ready to commence construction of the pipeline as soon as low dam levels or increased demand trigger the need. ▀



*Gladstone's Awoonga Dam*

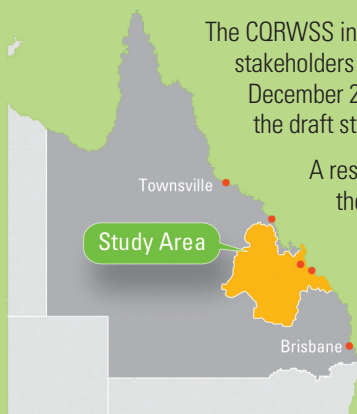
### Long-term planning for regional water security

GAWB's vision for long-term security of water supply is one shared by many within the region. GAWB has worked closely with many stakeholders to develop appropriate water supply strategies within the region. These include the Central Queensland Regional Water Supply Strategy and GAWB's own Strategic Water Plan.

#### Central Queensland Regional Water Supply Strategy

The Central Queensland Regional Water Supply Strategy (CQRWSS) was initiated in response to prolonged severe drought in Central Queensland, from which it became evident that a regional, whole-of-government approach was the most efficient way of meeting water supply challenges.

The strategy area, covering 153,000 square kilometres, includes the Fitzroy River Basin and the coastal streams of the Capricorn Coast and the Gladstone region.



The CQRWSS involved extensive consultation with many stakeholders over several years, and was finalised in December 2006 following a public consultation period on the draft strategy.

A reservation of 30,000 ML per annum (ML/a) from the Fitzroy River was made for GAWB in the CQRWSS. A pipeline between Gladstone and the Fitzroy River was also part of the regional solution set out in the 50 year strategy.

#### GAWB's Strategic Water Plan

The Strategic Water Plan, released in November 2004, was a collaborative effort between GAWB, government, industry and the community. The plan, developed over more than 12 months, sets out GAWB's strategic options to best meet the region's water needs.

The plan considered all available water sources and analysed them in terms of cost, quality, environmental and social impacts and reliability. Options such as demand management (water restrictions), recycling, new dams and weirs, industrial cooling conversions and desalination were considered.

With recycling opportunities all implemented in Gladstone, and water already being used very efficiently after the last drought, the Strategic Water Plan concluded that a pipeline supplying 30,000 ML/a from the Fitzroy River was the preferred option. ▀



*Awoonga Dam at its lowest level in 2002*

## GAWB's revised Drought Management Plan

GAWB recently released its revised Drought Management Plan (DMP) after revisiting the way it calculates worst-case inflow predictions for Awoonga Dam. The DMP explains how GAWB must assess possible drought conditions, and when it must make notifications and take actions in response.

The previous DMP assumptions were based on the average of the ten worst consecutive inflow years on record (69,243 ML/a per annum). On review, GAWB found that since 2004 average inflows into the dam have been around two thirds lower than this.

Inflow assumptions in the revised DMP are now based on the annual average of the worst three-year inflow sequence, currently 2004-2007, giving a revised inflow assumption of 23,633 ML/a.

GAWB will review this worst-case three year sequence following the 2007/08 wet season. Regular review of the DMP is vital to ensure GAWB can assess drought risks and take action to protect the system's capacity to supply water to the region.



With the revised inflow assumptions, the region is facing a situation where, if additional water supply options are not investigated, there is the possibility of running out of water by 2011.

The process that GAWB uses to identify the occurrence of drought and the actions that will be triggered to reduce the consequences of this are outlined in GAWB's DMP.

GAWB defines drought as a period of time where, taking into consideration the worst predicted annual inflows, water stored in Lake Awoonga could be insufficient to meet demand at some time during the next five years.

GAWB's preferred approach to dealing with drought is to focus on supply augmentation rather than imposing water restrictions.

Water restrictions come into play when there are no other options, but by forward planning to secure an additional, reliable water source, GAWB is working towards implementing alternatives for the region.

GAWB's revised DMP can be viewed online at: [www.gawb.qld.gov.au](http://www.gawb.qld.gov.au).

## Final Terms of Reference released

The final Terms of Reference (ToR) for the proposed Gladstone-Fitzroy Pipeline project's Environmental Impact Statement (EIS) were issued to GAWB by the Coordinator-General on 30 October 2007, after a four-week public comment period during September 2007. Submissions were received during this time from a number of government agencies and community organisations.

The ToR are essentially the 'rule book' for the preparation of the project's EIS. The EIS will examine a wide range of issues including environmental, social and economic impacts associated with the proposed pipeline. The Coordinator-General's decision to declare the project a 'significant project' requiring an EIS highlights the environmental significance

of the area and the desire for a rigorous and open impact assessment of the environmental, social and economic effects of the project.

A team of experts has been working on studies since early 2007 that will be used for the project's EIS. The EIS is expected to be complete by early 2008, when it will be released to the community for comment before being assessed by the Queensland and Commonwealth governments.

To find out more about the EIS process for the Gladstone-Fitzroy Pipeline or to view the project's final ToR visit: [www.coordinatorgeneral.qld.gov.au](http://www.coordinatorgeneral.qld.gov.au).



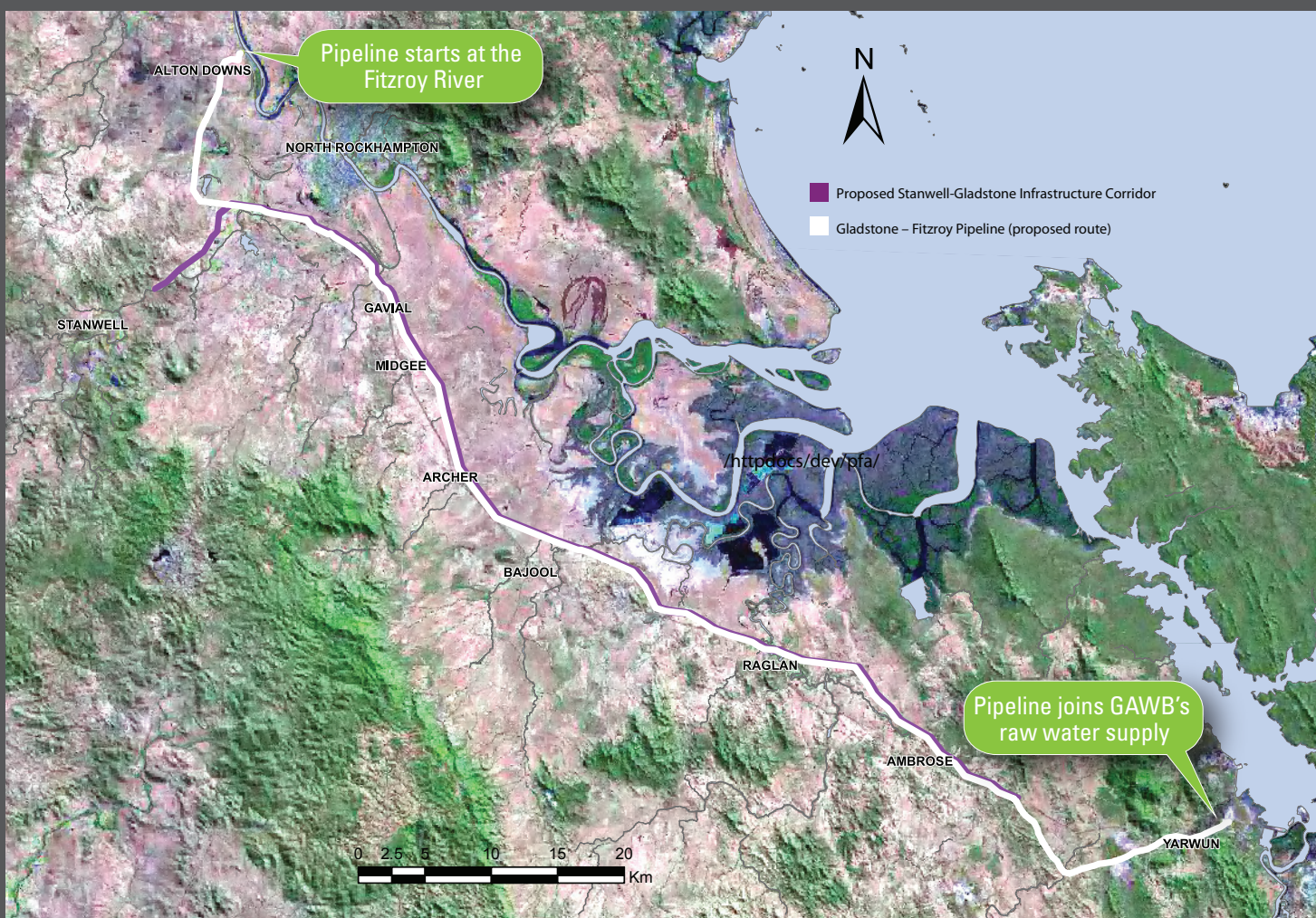
# Route selection

While the details of the Gladstone-Fitzroy Pipeline route are not yet finalised, it is anticipated that the majority of its length will run within the proposed Stanwell-Gladstone Infrastructure Corridor (SGIC). The SGIC is a State Government initiative to coordinate infrastructure in the region. It was publicly notified in 2006, with subsequent consultation in mid 2007.

To the north, commencing at the Fitzroy River, GAWB will be seeking a grant of easement to connect with the SGIC. At the southern end, the pipeline will continue through the

Gladstone State Development Area (GSDA) to connect with GAWB's existing water infrastructure. GAWB is examining land acquisition alternatives in these areas.

GAWB has been working closely with the community, local councils and industry over recent months in carrying out technical investigations and gathering feedback to locate a preferred pipeline corridor. This feedback and the results of preliminary investigations are being considered in determining the route for the proposed pipeline. ▽



## GAWB selects contractor for Early Contractor Involvement

GAWB recently called for tenders for contractor and design teams to develop a detailed, costed design for the Gladstone-Fitzroy Pipeline project under an Early Contractor Involvement (ECI) contract. Despite the current tight conditions of the infrastructure market, seven tenders were received, surpassing government and industry expectations and reaffirming the significance of the pipeline project.

The quality of the tenders was high, and following a rigorous selection process, GAWB is now finalising matters with a preferred contractor. GAWB is very pleased with the interest shown in the region, and believes the flexible, cooperative style of working required under the ECI contract will ensure good outcomes for customers and the community. ▽

## Community consultation

Since announcing the project in June, GAWB has been in close consultation with landowners, local councils and industry. This will continue as GAWB prepares the project's EIS, before its release to the community in early 2008 for a formal public comment period.

If you have a question about the project, please do not hesitate to contact a member of the project team. ▽

**Phone:** 1800 771 185

**Email:** [info@gladstone-fitzroypipeline.com.au](mailto:info@gladstone-fitzroypipeline.com.au)

**Post:** Reply Paid PO Box 110,  
Gladstone Q 4680.



# Baseline studies

Baseline studies are well underway for the Gladstone-Fitzroy Pipeline project's EIS. To inform these studies and help establish these baseline conditions, fieldwork was undertaken in the project area during August 2007, and in some cases is still continuing. Fieldwork was undertaken for the following areas:

## **Landscape and visual assessment**

Observations were made along the pipeline alignment to identify the significant landscape features in the project area and the sensitive receptors to any landscape or visual changes that may occur as part of the project.

## **Air quality**

Data from air quality monitoring sites will be used to assess any potential impact that the construction or operation of the pipeline may have in these areas.

## **Noise**

Noise monitoring was undertaken along the pipeline route to gain an understanding of the baseline noise environment in the area. This included the placement of noise loggers near the proposed sites for infrastructure associated with the project.

## **Fauna**

A number of species have been observed in the study area. A specific monthly fauna survey being carried out is focused on a bird called the Capricorn Yellow Chat. The Capricorn Yellow Chat is listed as 'Critically Endangered' under the Commonwealth *Environment and Biodiversity Conservation Act 1999*, while the species is listed as 'Vulnerable' under the Queensland *Nature Conservation Act 1992*. Yellow Chat surveys will continue on a monthly basis until early 2008 to account for seasonal variations in the birds' use of habitat.

A seasonal bird survey has also been undertaken for other bird species. The main fauna survey in the study area will occur over two weeks in November, pending appropriate warm conditions.

## **Flora**

Flora surveys were undertaken over a two week period at a number of properties in the project area where there is likely to be significant vegetation, including species listed as threatened under State and Federal Legislation.

Of particular significance in the study area is the presence of 'Semi-evergreen vine thickets of the Brigalow Belt and Nandewar Regions'. Patches of this Threatened Ecological Community exist in the project area and are protected under the *Environment Protection and Biodiversity Conservation Act 1999*.

## **Geology and Soils**

Test pits were completed along the pipeline route to identify the geotechnical conditions to inform the detailed design. In parallel with this process, samples were taken from selected test pits to enable the geological and soil characteristics to be described in the EIS.

This included the collection of selected samples in high risk Potential Acid Sulfate Soil (PASS) zones. These samples were then sent for laboratory analysis to establish where PASS occur along the alignment and enable appropriate mitigation measures to be specified in the EIS.

A detailed PASS investigation will be conducted prior to the commencement of construction and a PASS management plan will be implemented during construction. ▽



## Contact

For more information about the Gladstone-Fitzroy Pipeline project:

**Web:** [www.gladstone-fitzroypipeline.com.au](http://www.gladstone-fitzroypipeline.com.au)

**Phone:** 1800 771 185

**Email:** [info@gladstone-fitzroypipeline.com.au](mailto:info@gladstone-fitzroypipeline.com.au)



# GLADSTONE – FITZROY PIPELINE PROJECT



project update

May 2008



## PIPELINE PREPARATIONS CONTINUE

Despite recent rainfall, the Gladstone Area Water Board (GAWB) is progressing with environmental approvals and design of the Gladstone-Fitzroy Pipeline project to ensure the pipeline can be built within a two-year timeframe when it is required.

While the Gladstone region has sufficient water for the short-term – with 190,000 megalitres (ML) flowing into Awoonga Dam from recent rainfall – consistently low inflows during the past ten years and strong industrial growth in the region have signalled the need for a second source of water to ensure a long-term supply for the region.

GAWB is planning for the region's future water needs by proactively preparing contingency plans that will secure water

within a suitable timeframe when additional water supply is required. As part of this forward planning, GAWB is continuing with preparations for the Gladstone-Fitzroy Pipeline, including finalising a preferred corridor, designing the pipeline and gaining the necessary environmental approvals, to ensure a two-year construction phase can commence as soon as low dam levels or increased demand trigger the need.

Once operational, the Gladstone-Fitzroy Pipeline will be capable of delivering up to 30,000ML of water each year, providing an additional water source to augment that from Awoonga Dam, currently the Gladstone region's sole source of water. ▽

### Triggers and timing

GAWB has identified two scenarios that would trigger the need to commence construction of the pipeline:

#### Drought

GAWB has defined drought as a period of time where, taking into consideration the annual average of the worst three-year inflow sequence, water stored in Lake Awoonga could be insufficient to meet demand at some time during the next five years.

Prior to recent rainfall which added around two years of additional supply, this was the most likely trigger for the construction of the pipeline.

GAWB's Drought Management Plan provides more detail and can be viewed at [www.gladstone-fitzroypipeline.com.au](http://www.gladstone-fitzroypipeline.com.au).

#### Demand

GAWB can currently supply around 70,000ML of water annually to customers based on its current allocation of water from Awoonga Dam. Increased demand for water would also trigger the need for GAWB to secure an additional water supply, as GAWB cannot take more than its allocation of water from the dam.

GAWB works closely with current and potential customers, including local councils who supply water directly to their rate payers, to monitor their projected requirements to ensure it will be able to meet the demand for water when it is needed. ▽



# ENVIRONMENTAL APPROVALS UPDATE

GAWB is currently in the process of finalising its Environmental Impact Statement (EIS) for the Gladstone-Fitzroy Pipeline project.

## What is an EIS?

An EIS is a document prepared to report on a range of investigations undertaken for a project. It describes the existing conditions, provides information about the proposed project or works, and assesses the impacts and benefits of the changes resulting from the proposed project. The EIS also describes and assesses the management or mitigation measures that would be required to address the impact of the proposed project.

The purpose of the EIS is to provide decision makers with an accurate and considered description of the potential impacts and benefits of the proposed project, and detail of what

actions need to be taken to ensure negative impacts are avoided or minimised wherever possible. Both the construction and operational phases of the project are considered.

## Preparing the EIS

To ensure that the EIS adequately covers all issues relevant to the construction and operation of the project, the Coordinator-General issues the draft Terms of Reference (ToR) for the EIS for community and government agency comment.

The ToR is essentially the 'rule book' for the preparation of the EIS. It outlines the topics that need to be addressed in the EIS, and defines the level of detail required in the description of the existing conditions, level of impact, and mitigation or management measures required.

The final ToR for the Gladstone-Fitzroy Pipeline project's EIS were issued to GAWB by the Coordinator-General on 30 October 2007, after a four-week public comment period.

## Your chance to comment

The project's EIS is expected to be released to the community in mid-2008 for a public comment period, during which time members of the community and other interested parties can make formal submissions based on the key findings.

The EIS will be accessible to the community in various formats including CD-Rom and hard copy. Information sessions and public displays will be conducted at this time to assist people in understanding the key findings of the EIS. \

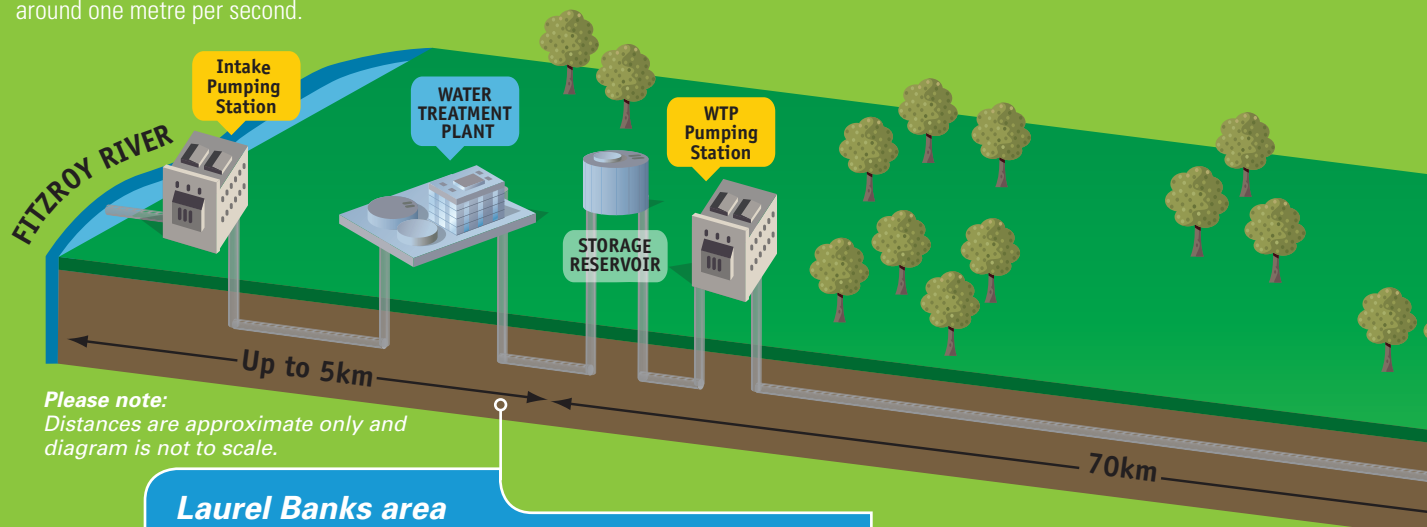
## It's not just a pipeline

There is more to the Gladstone-Fitzroy Pipeline than just a pipe. In order to source water from the Fitzroy River and bring it to Gladstone in a suitable condition, other infrastructure is also required. This includes an intake structure, a water treatment plant, three reservoirs and three pumping stations. The diagram below (not to scale) shows how these elements will be arranged along the length of the pipeline.

When the pipeline is full it will contain around 90,000 cubic metres of water that will move along the pipeline at a speed of around one metre per second.

## Why treat the water?

Even though water sourced from the Fitzroy River will be used in GAWB's raw water reticulation system rather than being added directly to Awoonga Dam or GAWB's potable water system, it still has to be treated before it travels along the pipeline. This is to reduce the concentration of solid particles minimising the potential for the build up of silt in the pipeline, ensuring that the piped water is of a similar quality to that within Gladstone's existing raw water reticulation system. \



### Laurel Banks area

The intake structure, the initial pumping station, the water treatment plant, a storage reservoir (with a capacity of 7.5ML) and the second pumping station will be located in this area.

# Route and Site Selection

GAWB is currently finalising route and site options for the location of the pipeline and its associated infrastructure, including a Water Treatment Plant (WTP). Other key sites that GAWB must select are the pipeline's intake and intake pumping station on the Fitzroy River, the Raglan pumping station and the Aldoga Reservoir, as outlined in the diagram below. GAWB is pleased with the progress of its discussions with landowners to date regarding these sites and is continuing to work with landowners who have concerns about specific areas to resolve any issues.

From a technical perspective, site suitability is being assessed against a range of criteria including flood level, land slope, site access, soil conditions and proximity to residential buildings, the Fitzroy River and intake structures and pumps. GAWB has worked with landowners and relevant Aboriginal parties to undertake a number of technical investigations to assess these criteria. These technical investigations, along with desktop studies, consultation with landowners and site visits to potentially suitable locations, form the basis of GAWB's site selection process.

GAWB has assessed a variety of options to find solutions for the pipeline that are acceptable to the community, environmentally conscious and financially responsible. 🌱

## Preparations for pipeline design underway

GAWB has appointed a joint venture between Clough Projects Australia Pty Ltd, Diversified Construction Corporation Pty Ltd and United Group Infrastructure Pty Ltd, known collectively as the CDU Joint Venture. Under an Early Contractor Involvement contract, the CDU Joint Venture will prepare detailed design documentation and construction plans for the pipeline.

As with any major infrastructure project, the Gladstone-Fitzroy Pipeline project is complex and multi-faceted (as shown in the diagram below), with significant considerations needed to first locate the preferred route and suitable sites for its associated infrastructure, then establish an appropriate design and finally construct the pipeline. 🌱

## PROJECT TIMELINE\*

### April 2007

Project announcement.

### May 2007

Route selection commences.

### June 2007

Landowner consultation commences.

### August 2007

Technical investigations commence.

### October 2007

Final ToR for EIS released.

### January 2008

CDU Joint Venture appointed. Investigations to determine final route and design.

### Mid - late 2008

EIS released to public for comment.

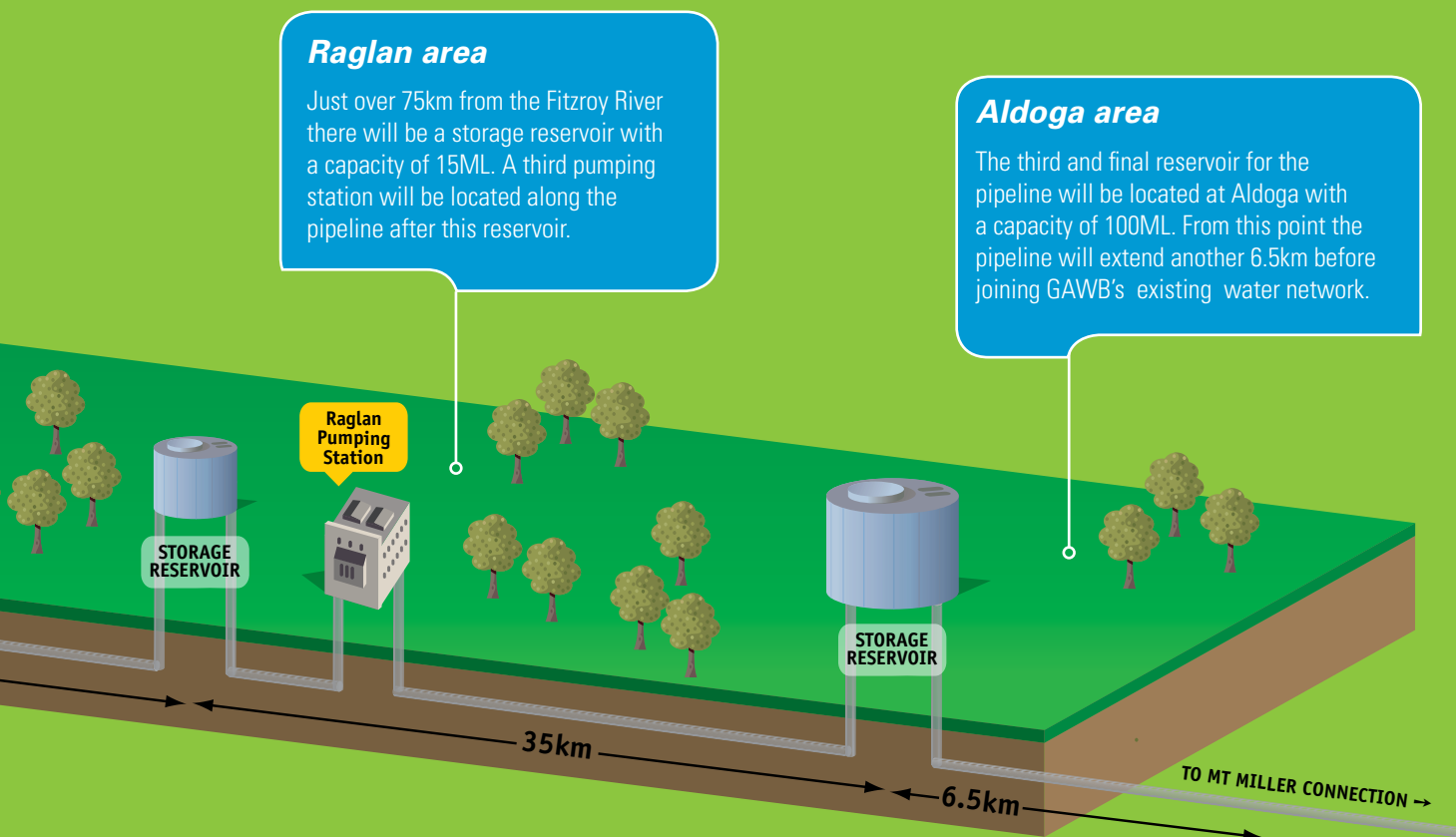
### Early 2009

Coordinator-General provides decision on the EIS.

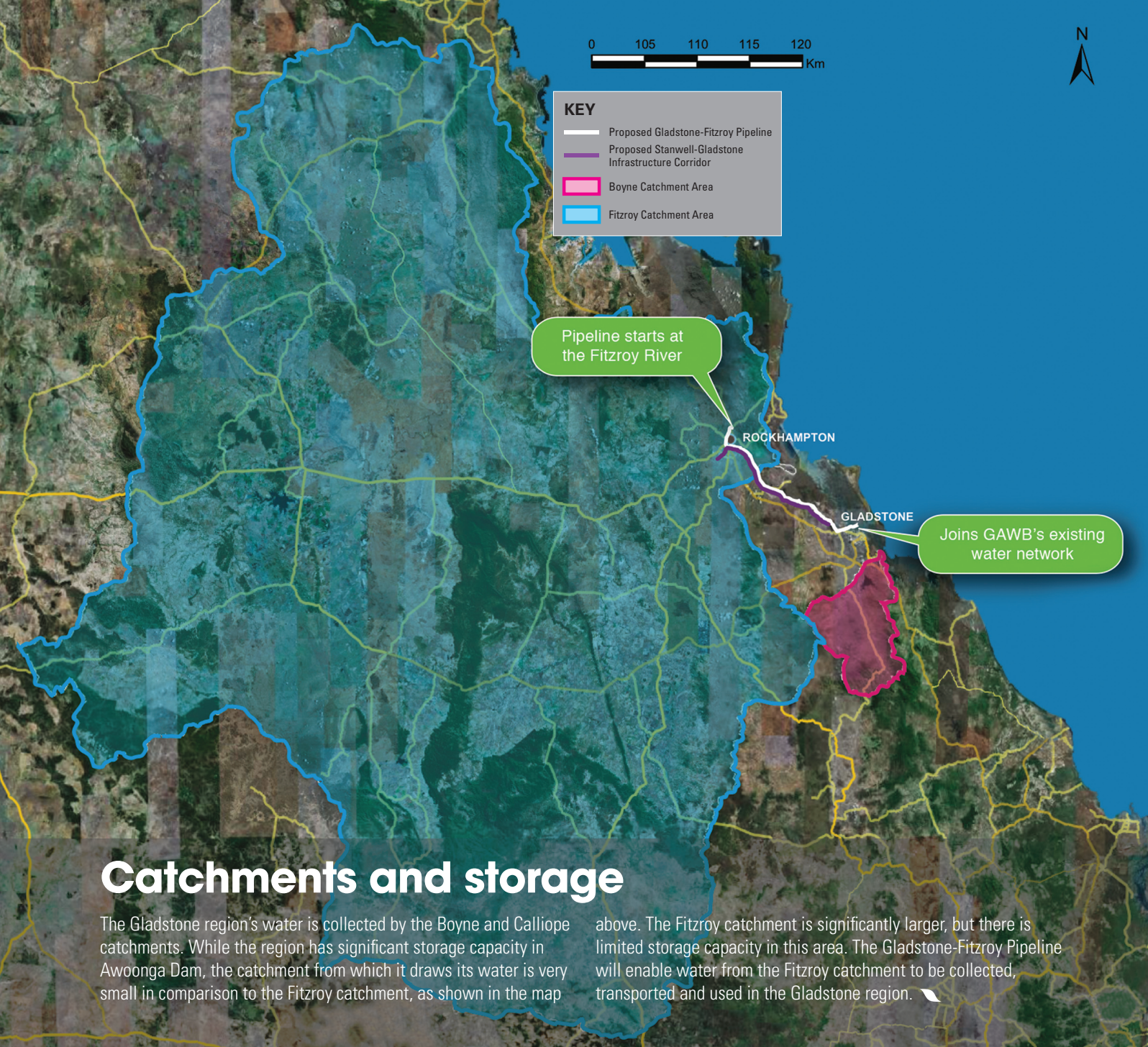
Construction to commence when drought or demand triggers need.

Pipeline operational two years after construction commences.

\* Based on current project timelines







## FAST FACTS

- Awoonga Dam is the fourth largest dam in South East Queensland, with a capacity of 777,000ML (1.4 times that of Sydney Harbour).
- Water from the Gladstone-Fitzroy Pipeline will not be added directly to Awoonga Dam, it will be used in GAWB's raw water network which is used by industry in the region.
- Based on cost estimates, the Gladstone-Fitzroy Pipeline will bring lower prices to customers than an equivalent capacity desalination plant
- GAWB currently has an annual allocation of 70,000ML, to be increased to 78,000ML when Awoonga Dam fills for the first time (based on enough water in the dam to supply Gladstone for 10 years).
- The Gladstone-Fitzroy Pipeline will be approximately 115km long, with a diameter of approximately 1m and a capacity to transfer up to 30,000ML per annum.

## CONTACT

For more information about the Gladstone-Fitzroy Pipeline project:

**Web:** [www.gladstone-fitzroypipeline.com.au](http://www.gladstone-fitzroypipeline.com.au)

**Phone:** 1800 771 185

**Post:** Reply Paid PO Box 110 Gladstone Q 4680

**Email:** [info@gladstone-fitzroypipeline.com.au](mailto:info@gladstone-fitzroypipeline.com.au)



**Gladstone Area  
Water Board**



# Customer update

January 2008



## From the CEO

Water is a vital resource that GAWB, industry and the community need to responsibly manage together. Our vision is to provide an environmentally, socially and commercially sustainable water supply for the region both now, and into the future. With inflows to Awoonga Dam since 2004 at record lows, we risk supply failure if we don't proactively seek additional water supply options.

GAWB is working hard to prove the commercial viability of the Gladstone-Fitzroy Pipeline and gain the required environmental approvals to ensure the pipeline can be constructed when it is needed. This will provide customers with a cost effective solution that meets the community's expectations and is environmentally responsible.

This newsletter will give you information about GAWB's preparation for the Gladstone-Fitzroy Pipeline project. I encourage you to contact me should you have any questions about the project or GAWB's current activities. 🍌

Jim Grayson  
**Chief Executive Officer**

## Gladstone-Fitzroy Pipeline Project Effect on Water Prices

GAWB's commercial framework and water prices for all customers are determined in accordance with pricing principles adopted by GAWB following recommendations made by the Queensland Competition Authority (QCA) and accepted by the QCA Ministers (the Premier and Treasurer). These principles for cost-reflective pricing comply with the objectives of the National Water Initiative adopted by the Council of Australian Governments.

In accordance with earlier recommendations made by the QCA, GAWB's commercial framework does not differentiate pricing between existing and new customers, even when the introduction of new customers requires GAWB to access an additional water source. There are a number of reasons for this, including fairness. The QCA also recognised that differential pricing would discourage growth within the region.

Prices for all customers in Gladstone, both new and old, are calculated in accordance with the same principles. These principles involve GAWB recovering the cost of its operations from all of its customers, on the basis of their water requirements, via its prices.

Drought conditions around Australia have seen greater emphasis on water supply planning and delivery of new water sources to maintain supply to

metropolitan centres and to support industry. Unlike many other utilities, the cost of new water sources is usually more expensive than the previous source, as there are limited options for new sources and it is expensive to move, unlike electricity or data. This will see an increase in the cost of supplying water to cities and industry, and in turn the prices paid by water users throughout Australia.

The Gladstone-Fitzroy Pipeline would represent a significant investment for GAWB to ensure the continuity of water supply amidst drought or significant growth in demand. In turn, this investment would have a significant impact on prices charged by GAWB to its customers.

In recognition of this, in February 2007, the QCA was directed by the Premier and Treasurer to review:

- (a) GAWB's proposed recovery of preparatory expenditure for the Gladstone-Fitzroy Pipeline, including the prudence of the pipeline as the appropriate contingent source strategy, the level of efficient costs, the timing of expenditures and the means for including costs in prices in future years
- (b) The proposed criteria for triggering the implementation of the Contingent Supply Strategy in the event of drought or unexpected increases in demand
- (c) The changes proposed by GAWB to its pricing practices once the augmentation is completed.

*continued on page 2...*

## Gladstone-Fitzroy Pipeline Project – Effect on Water Prices continued...

GAWB lodged its submission on part (a) of the Referral Notice in March 2007. Following consultation with stakeholders, the QCA released a draft report in October 2007 that was finalised in December 2007. At this time, GAWB provided the QCA with its submissions upon part (b) of the Referral Notice (copies of submissions are available both on GAWB's website and on the QCA website [www.qca.org.au/water/gladstone-2007](http://www.qca.org.au/water/gladstone-2007)).

GAWB's pricing principles require it to act efficiently to deliver its services. This means that when GAWB augments its supply capacity (such as the Gladstone-Fitzroy

Pipeline) it must demonstrate that it represents the least cost option in the circumstances. This is a major reason for the current QCA investigation.

GAWB commissioned the preparation of a report from Wedgewood White Limited (WWL) that analysed indicative prices arising from supply augmentation options, comprising both desalination and Fitzroy Water, by reference to different demand scenarios. The analysis shows that the indicative water prices for the pipeline project are lower than for an equivalent capacity desalination plant under all demand scenarios considered.

The WWL report also reviews key inputs to the calculation of water price as well as comparative prices from other regions. A copy of the WWL report can be downloaded from GAWB's website [www.gawb.qld.gov.au/](http://www.gawb.qld.gov.au/).

In accordance with its submissions on part (b) of the Referral Notice, GAWB is supplying all customers with indicative prices that have been developed (using the demand scenarios contained in the WWL report). This will assist customers to assess whether they have alternative measures to pursue in preference to the construction of the pipeline. 🏹

## Fitzroy River Water

The Central Queensland Regional Water Supply Strategy (CQRWSS) was initiated by the Queensland Government in response to prolonged severe drought in Central Queensland, from which it became evident that a regional, whole-of-government approach was the most efficient way of meeting water supply challenges.

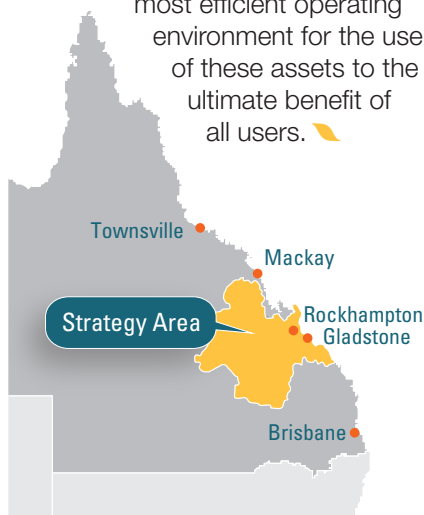
The strategy area, covering 153,000 square kilometres, includes the Fitzroy River Basin and the coastal streams of the Capricorn Coast and the Gladstone region. The CQRWSS involved extensive consultation with many stakeholders over several years, and was finalised in December 2006 following a public consultation period on the draft strategy.

A reservation of 30,000 megalitres per annum (ML/a) from the Fitzroy River was made for GAWB in the CQRWSS. A pipeline between Gladstone and the Fitzroy River was part of the regional solution set out in the 50 year strategy.

In July 2007, Livingston Shire Council, Rockhampton City Council, SunWater and GAWB were jointly declared by the Coordinator-General

as the "preferred proponent" to develop the additional storage capacity upon the Fitzroy River contemplated by the CQRWSS, including GAWB's 30,000 ML/a supply.

The four parties have recently finalised a Memorandum of Understanding concerning the creation of a single company to own and operate the existing Rockhampton Barrage, the Eden Bann Weir and all new water storages to be constructed on the Fitzroy River. These arrangements are intended to produce the most efficient operating environment for the use of these assets to the ultimate benefit of all users. 🏹



The CQRWSS area

## Funding Support

*Labor's National Plan to Tackle the Water Crisis*, a policy document released just prior to the Federal Election last November, contained a \$20 million commitment towards the Gladstone-Fitzroy Pipeline to "secure water supplies for Gladstone". GAWB will seek to work with the Federal Government in the coming months to realise the benefit of this commitment.

In addition, the Queensland Government's Statewide Water Policy contains a commitment of \$48 million for the Gladstone-Fitzroy Pipeline with additional financial commitments for the construction of extra water storages on the Fitzroy River. 🏹

# Final Terms of Reference released

The final Terms of Reference (ToR) for the proposed Gladstone-Fitzroy Pipeline project's Environmental Impact Statement (EIS) were issued to GAWB by the Coordinator-General on 31 October 2007, after a four-week public comment period during September 2007. Submissions were received during this time from a number of government agencies and community organisations.

The EIS will examine a wide range of issues including environmental, social and economic impacts associated with the proposed pipeline.

The Coordinator-General's decision to declare the project a 'significant project' requiring an EIS, highlights the environmental significance of the area and the need for a rigorous and open impact assessment. A team of experts has been working on studies since early 2007 that will be used for

the project's EIS. The EIS is expected to be complete by early 2008, when it will be released to the public for comment before being assessed by the Queensland and Commonwealth Governments.

To find out more about the EIS process for the Gladstone-Fitzroy Pipeline or to view the project's final ToR visit:  
[www.coordinatorgeneral.qld.gov.au](http://www.coordinatorgeneral.qld.gov.au).

## GAWB's Contingent Supply Strategy

GAWB's Contingent Supply Strategy (CSS) involves identifying the likely causes of supply failure and having a supply solution ready for implementation within a defined timeframe. This gives GAWB the ability to respond within a short timeframe to supply or demand triggers.

GAWB's CSS is currently focused on the Gladstone-Fitzroy Pipeline as this will give access to a highly reliable source of water that can be accessed in a defined timeframe based on a 24-month construction period. By gaining the appropriate environmental approvals, and planning and designing the pipeline now, GAWB will be ready to commence construction when the pipeline is required. 🌱

## Triggers and timing

As detailed in GAWB's submissions to the QCA concerning part (b) of the Referral Notice, GAWB has proposed two triggers that are intended to allow construction to commence 'as late as safe':

- (a) a drought trigger in accordance with the Drought Management Plan
- (b) a demand trigger activated when the aggregate of water reserved by supply contracts exceeds the current maximum of water GAWB can supply from Awoonga Dam, less a small buffer.

GAWB's submissions to the QCA also outline a process to illicit proposals by customers for reducing demand and deferring the need to create an additional water source. Proposals will be assessed to determine if any options represent better value for investment than augmentation. 🌱



## GAWB selects contractor for Gladstone-Fitzroy Pipeline project

A joint venture between Clough Projects Australia Pty Ltd, United Group Infrastructure Pty Ltd and Diversified Construction Corporation Pty Ltd (CDU Joint Venture) has been appointed under an Early Contractor Involvement (ECI) contract for the Gladstone-Fitzroy Pipeline project.

The joint venture was appointed

based on their experience in the design, construction and operation of water infrastructure assets. CDU has joined GAWB's project team to prepare a Project Delivery Proposal by July 2008. This will include detailed design documentation, construction plans, and a risk adjusted price for its construction. GAWB believes the flexible,

cooperative style of work required under the ECI contract will ensure high quality outcomes for customers and the community.

By involving a contractor in the design and development of the project at this early stage, GAWB will be in a position to commence construction as soon as required. 🌱



# GAWB's Revised Drought Management Plan

GAWB recently released its revised Drought Management Plan (DMP) after revisiting the inflow forecasts used to predict future storage levels in Awoonga Dam. GAWB's adoption of more conservative inflow assumptions (namely the annual average of the worst three-year inflow sequence) in recognition of the severity of the current drought, is in line with more conservative inflow assumptions being adopted in other regions such as South East Queensland and Melbourne.

GAWB will review this worst-case three-year sequence following the 2007/08 wet season.

In October 2007 GAWB issued a Low Supply Alert to customers in accordance with the DMP, advising customers there may be five years supply available, consistent with assumptions concerning future inflows and customer demand detailed in the DMP.

Customers were advised to pay particular attention to ensure that

their future water demand is secured by contract because:

- GAWB uses the aggregate of these demands to forecast the levels in Awoonga Dam when making drought response decisions (including augmentation)
- When Awoonga Dam reaches 48 months from failure under the DMP, 10% restrictions will be imposed upon each customer's Contracted Water Reservation, with customers unable to increase the level of their reservation until the Low Supply Alert has been lifted. This may occur by mid-2008 depending upon inflow.

GAWB's preferred approach to dealing with drought is to focus on supply augmentation rather than imposing water restrictions, which are only considered when there are no other options. By forward planning to secure an additional, reliable water source, GAWB is working towards implementing alternatives for the region.

GAWB's revised DMP can be viewed online at:

[www.gawb.qld.gov.au](http://www.gawb.qld.gov.au) 🏠



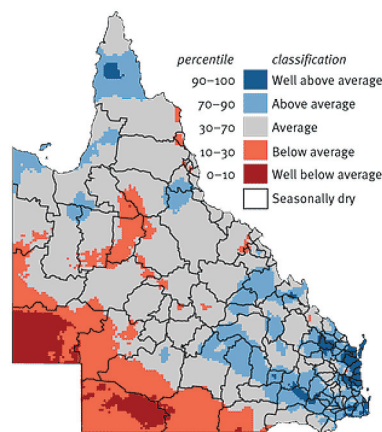
*Awoonga Dam at its lowest level in December 2002*

## Seasonal forecast for 07/08 wet season

The SPOTA-1 model is used by the Queensland Climate Change Centre of Excellence. It uses the relationship between historically similar rainfall years and El Niño-Southern Oscillation (ENSO) and the Inter-decadal Pacific Oscillation (IPO).

The seasonal outlook for the Boyne catchment, based on this model, shows an enhanced probability of the catchment experiencing moderate rainfall during the 2007/2008 wet season. Very low or very high rainfall in the catchment is considered a low probability.

Historical inflow records indicate February and March to be the most common months for significant inflow events to occur. GAWB's Drought Management Plan is revised following the end of the Wet Season for the Boyne Catchment (30 April) to take account of the actual inflow recorded for that year. 🏠



*Observed three-month rainfall (August–October 2007) relative to historical records.*

## Contact

To contact the Gladstone Area Water Board:

**Phone** (07) 4976 3000

**Web** [www.gawb.qld.gov.au](http://www.gawb.qld.gov.au)

**Email** [gawb@gawb.qld.gov.au](mailto:gawb@gawb.qld.gov.au)

**Fax** (07) 4972 5632

**Post** PO Box 466 Gladstone QLD 4680

For more information about the Gladstone-Fitzroy Pipeline project:

**Phone** 1800 771 185

**Web** [www.gladstone-fitzroypipeline.com.au](http://www.gladstone-fitzroypipeline.com.au)

**Email** [info@gladstone-fitzroypipeline.com.au](mailto:info@gladstone-fitzroypipeline.com.au)

**Post** PO Box 110 Gladstone QLD 4680



LETTERS



## Gladstone Area Water Board

ABN: 88 409 667 181  
Service Provider: 200

PO Box 466  
GLADSTONE Q 4680

2nd Floor  
147 Goondoon Street  
GLADSTONE Q 4680

Tel: (07) 4976 3000  
Fax: (07) 4972 5632

Email:  
[gawb@gawb.qld.gov.au](mailto:gawb@gawb.qld.gov.au)  
Web:  
[www.gawb.qld.gov.au](http://www.gawb.qld.gov.au)



30 May 2007

Dear

I am writing to inform you that the Gladstone Area Water Board (GAWB) today announced the commencement of investigations for its Gladstone – Fitzroy Pipeline.

The Gladstone – Fitzroy Pipeline will connect the Fitzroy River with GAWB's raw water supply network via an underground pipeline approximately 110 kilometres in length, linking two major sources of water for the region.

The Gladstone – Fitzroy Pipeline is a key outcome from the 2006 Central Queensland Regional Water Supply Strategy, a co-operative strategy developed by the State Government, local councils, regional water supply bodies and other local stakeholders. GAWB's own 2004 Strategic Water Plan also found that the pipeline had the highest combined environmental, social and economic merit when compared to supply options such as desalination, new dams and weirs or further industrial demand management.

The Central Queensland Regional Water Supply Strategy reserved up to 30,000 ML per year of water to GAWB from the Fitzroy River to augment the region's water supply, which currently comes from a sole source, Awoonga Dam. This allocation of water allows GAWB to proceed with the pipeline project with certainty. The water would be made available by new pipeline infrastructure from the Fitzroy River.

GAWB is keen to commence technical investigations to ensure the project is designed, approved and ready to be built when it is needed. While we have sufficient water for the short term, if current low rainfall and industrial growth trends continue, the pipeline could be required as early as 2011.

Technical, environmental and cultural heritage investigations will be conducted for the project from mid 2007. These investigations, together with feedback from the community, will allow a preferred pipeline corridor to be determined. An Environmental Impact Statement (EIS) will then be completed for the preferred corridor in late 2007, for public display and assessment by the Queensland State Government in 2008.

It is likely that the pipeline will run through the Department of Infrastructure's proposed Stanwell – Gladstone Infrastructure Corridor (SGIC). While the SGIC has not yet been declared by the State Government, the proposal has been in consultation since 2006. Given current and projected demand for water and low rainfall in the region over recent years, GAWB will commence investigations in the proposed pipeline corridor as soon as possible.

At the northern end, commencing at the Fitzroy River, GAWB will be seeking a grant of easement to connect with the SGIC and will examine the use of existing corridors and easements where possible. At the southern end, the pipeline will continue through the Gladstone State Development Area (GSDA) to connect with GAWB's existing water infrastructure.

GAWB will work closely with the community, local councils and industry in the coming months to progress planning for the Gladstone – Fitzroy Pipeline. For more information about the project, visit [www.gladstone-fitzroypipeline.com.au](http://www.gladstone-fitzroypipeline.com.au) or phone 1800 771 185.

Regards,

A handwritten signature in blue ink, appearing to read 'Jim Grayson', with a stylized flourish at the end.

Jim Grayson  
Chief Executive Officer  
Gladstone Area Water Board



## Gladstone Area Water Board

ABN: 88 409 667 181  
Service Provider: 200

PO Box 466  
GLADSTONE Q 4680

2nd Floor  
147 Goondoon Street  
GLADSTONE Q 4680

Tel: (07) 4976 3000  
Fax: (07) 4972 5632

Email:  
[gawb@gawb.qld.gov.au](mailto:gawb@gawb.qld.gov.au)  
Web:  
[www.gawb.qld.gov.au](http://www.gawb.qld.gov.au)



Reply please quote ref: CW2005/06-63

20 September 2007

Dear

Thank you for recently allowing GAWB and its consultants to access to your property for technical investigations for the Gladstone-Fitzroy Pipeline project. I am writing to advise that we have now completed the investigations on your property for this phase of the project. If additional investigations are required later this year we will contact you again to discuss them. If there are any issues concerning the recent works, please don't hesitate to contact our freecall information line.

We will continue to keep you informed regarding the progress of the Gladstone-Fitzroy Pipeline project and encourage you to call the information line on 1800 771 185 should have any questions. You can also visit [www.gladstone-fitzroypipeline.com.au](http://www.gladstone-fitzroypipeline.com.au) or email [info@gladstone-fitzroypipeline.com.au](mailto:info@gladstone-fitzroypipeline.com.au) for further information.

Yours faithfully,

Rosemary Fredriksen  
**Projects Administrator**



## Gladstone Area Water Board

ABN: 88 409 667 181  
Service Provider: 200

PO Box 466  
GLADSTONE Q 4680

2nd Floor  
147 Goondoon Street  
GLADSTONE Q 4680

Tel: (07) 4976 3000  
Fax: (07) 4972 5632

Email:  
[gawb@gawb.qld.gov.au](mailto:gawb@gawb.qld.gov.au)  
Web:  
[www.gawb.qld.gov.au](http://www.gawb.qld.gov.au)



Reply please quote ref: CW2005/06-63

31 October 2007

Dear

The Gladstone Area Water Board (GAWB) has commissioned cultural heritage consultants to investigate places of cultural heritage significance relevant to the Gladstone-Fitzroy Pipeline project for the project's Environmental Impact Statement (EIS).

A survey relating to historic (non-Indigenous) cultural heritage is planned to take place in and around the proposed corridor during November 2007.

Please find enclosed with this letter an information sheet on the cultural heritage surveys, as well as a response form for you to record any items of significance that you are aware of. A reply paid envelope has been included with this letter for you to return the response form.

We will continue to keep you informed regarding the progress of the Gladstone-Fitzroy Pipeline project and encourage you to call the information line on 1800 771 185 should you have any questions. You can also visit [www.gladstone-fitzroypipeline.com.au](http://www.gladstone-fitzroypipeline.com.au) or email [info@gladstone-fitzroypipeline.com.au](mailto:info@gladstone-fitzroypipeline.com.au) for further information.

Yours faithfully,

Marissa Brazier  
**Gladstone-Fitzroy Pipeline Project Team**



## Gladstone Area Water

ABN: 88 409 667 181  
Service Provider: 200

PO Box 466  
GLADSTONE Q 4680

2nd Floor  
147 Goondoon Street  
GLADSTONE Q 4680

Tel: (07) 4976 3000  
Fax: (07) 4972 5632

Email:  
[gawb@gawb.qld.gov.au](mailto:gawb@gawb.qld.gov.au)  
Web:  
[www.gawb.qld.gov.au](http://www.gawb.qld.gov.au)



Reply please quote ref: CW2005/06-63

6 December 2007

Dear

Preparations for the Gladstone Area Water Board's Gladstone Fitzroy Pipeline project are progressing with the release of the final Terms of Reference for the project's Environmental Impact Statement (EIS). In the coming months, GAWB and its consultants will complete the investigations required for the EIS, before it is released to the community for comment in early 2008.

Enclosed with this letter is a Project Update, designed to keep you informed of all activities and milestones associated with the project. Included in this Update is information about GAWB's revised Drought Management Plan, the recent release of the final Terms of Reference, route selection progress, Early Contractor Involvement, community consultation and baseline studies.

Additional information regarding above ground infrastructure for the pipeline, such as the water treatment plant, and the anticipated project timeline is now available on the project website.

GAWB will continue to work closely with the community, local councils and industry in the coming months to progress planning for the Gladstone – Fitzroy Pipeline. For more information about the project, visit [www.gladstone-fitzroypipeline.com.au](http://www.gladstone-fitzroypipeline.com.au) or phone 1800 771 185.

Regards,

Jim Grayson  
**Chief Executive Officer**  
Gladstone Area Water Board



## Gladstone Area Water

ABN: 88 409 667 181  
Service Provider: 200

PO Box 466  
GLADSTONE Q 4680

2nd Floor  
147 Goondoon Street  
GLADSTONE Q 4680

Tel: (07) 4976 3000  
Fax: (07) 4972 5632

Email:  
[gawb@gawb.qld.gov.au](mailto:gawb@gawb.qld.gov.au)  
Web:  
[www.gawb.qld.gov.au](http://www.gawb.qld.gov.au)



Reply please quote ref: CW2005/06-63

26 May 2008

Dear,

Gladstone Area Water Board (GAWB) is progressing with environmental approvals and design for the Gladstone Fitzroy Pipeline project despite recent rainfall to ensure the pipeline can be built within a two-year timeframe when it is required.

While recent rainfall saw an additional 190,000 megalitres (ML) of water flow into Awoonga Dam, consistently low inflows during the past ten years and strong industrial growth in the region have signalled the need for a second source of water to ensure a long-term supply for the Gladstone region.

A Project Update, which is designed to keep you informed about the progress of the project, has been included with this letter. This update includes the latest news about final preparations for the Environmental Impact Statement (EIS), including route and site selection and pipeline design.

GAWB will continue to work closely with the community, local councils and industry in the coming months to progress planning for the Gladstone – Fitzroy Pipeline. For more information about the project, visit [www.gladstone-fitzroypipeline.com.au](http://www.gladstone-fitzroypipeline.com.au) or phone 1800 771 185.

Regards,

Jim Grayson  
**Chief Executive Officer**  
Gladstone Area Water Board



## Gladstone Area Water Board

ABN: 88 409 667 181  
Service Provider: 200

PO Box 466  
GLADSTONE Q 4680

2nd Floor  
147 Goondoon Street  
GLADSTONE Q 4680

Tel: (07) 4976 3000  
Fax: (07) 4972 5632

Email:  
[gawb@gawb.qld.gov.au](mailto:gawb@gawb.qld.gov.au)  
Web:  
[www.gawb.qld.gov.au](http://www.gawb.qld.gov.au)



19 June 2008

Dear

The Gladstone Area Water Board (GAWB) is currently in the process of finalising the design of the Gladstone-Fitzroy Pipeline and preparing an Environmental Impact Statement (EIS) for the project.

GAWB would like to invite you to a community briefing about the Gladstone-Fitzroy Pipeline project.

The purpose of the briefing will be to discuss, prior to the finalisation of the EIS for the project, the Water Treatment Plant that GAWB proposes to construct in the Alton Downs area as part of the project.

**Date:** 26 June  
**Time:** 7:00pm  
**Venue:** Alton Downs Hall, 44 Nicholson Road, Alton Downs

GAWB staff, including myself, will provide an overview both the construction and operation of the Water Treatment Plant. The intention for the briefing is to provide an opportunity for you to learn more about the proposal, ask questions and discuss what this means to you and your community.

We understand that residents may wish to discuss other matters, including issues relating to the pipeline location and associated easements in Alton Downs. We will be arranging for similar briefings in the near future to discuss these matters, but will endeavour to answer any questions at the briefing.

When the EIS is finalised and released, GAWB will also be undertaking further information sessions in the Rockhampton and Alton Downs area to assist local residents to understand the project and provide comments and submissions about the project as part of the EIS process.

If you are unable to make this date or have any queries about this community briefing or the pipeline project in general, please phone the free call information line on 1800 771 185.

Further information about the project can be accessed on the project website [www.gladstone-fitzroypipeline.com.au](http://www.gladstone-fitzroypipeline.com.au).

Regards,

Jim Grayson  
**Chief Executive Officer**  
Gladstone Area Water Board



# FACT SHEETS

# GLADSTONE – FITZROY PIPELINE PROJECT



## Environmental Management and Occupational Health and Safety

Environmental Management and Occupational Health and Safety are of great importance to the Gladstone Area Water Board (GAWB). A comprehensive Occupational Health, Safety and Environmental Management Plan has been prepared to govern all technical investigations for the Gladstone-Fitzroy Pipeline project. This information sheet will give you an overview of the strategies and procedures that will be implemented by GAWB and its representatives to ensure safe work and sound environmental practices are maintained throughout the technical investigations.

Prior to commencing any technical investigations, all personnel will be inducted into the Occupational Health, Safety and Environmental Management Plan to ensure they understand and adopt the procedures set out in the plan.

### Occupation Health and Safety

Personnel carrying out the technical investigations for the Gladstone-Fitzroy Pipeline project have a duty of care for their own safety and for the safety of others while undertaking works for the project. GAWB is responsible for ensuring safe work practices are in place for both its staff and personnel sub-contracted to undertake works on GAWB's behalf. A number of procedures are in place to achieve this, including:



- A Safe Work Plan will be prepared for each party. This plan will list activities and will highlight any risks associated with these and mitigation strategies to limit these risks.
- Personnel will carry relevant identification to ensure landowners are aware of who is accessing their property.
- GAWB staff and its contractors will be equipped with first aid equipment.
- All personnel will wear personal protective equipment, i.e. long sleeve shirt and trousers, safety footwear and sun protection, on site.
- All personnel will use appropriate vehicles and safe travel speeds whilst undertaking activities during the project's technical investigations.
- Gates will be left as found to prevent interference with livestock movement.
- In the event of wet weather, site works will be assessed to determine if they should commence/continue.
- For some activities a dedicated coordinator will be present on site to liaise between all parties.
- Most activities will only be carried out during daylight hours and/or on weekdays to ensure they are safe and to ensure disruption is minimised.

## Environmental Management

The Occupational Health, Safety and Environmental Management Plan details procedures GAWB has implemented to minimise the environmental impact of works carried out during the project's technical investigations.

Landowners have assisted GAWB and its consultants in the development of an environmental profile for their land, which helps to determine the most appropriate management procedures.

General environmental management procedures that GAWB will implement include:

- Minimising dust, noise, sedimentation and vibration levels for all works.
- Ensuring that access ways, tracks, crossings etc. are protected and are kept clear during works.
- GAWB staff and its contractors will strictly follow weed management procedures (see below for more detail).
- Fauna will not be transported from the locations where they were found.
- Personnel carrying out activities prone to exposing Acid Sulphate Soils (ASS) will carry equipment and materials to manage ASS.
- Vegetation clearance will be kept to a minimum.
- Known sites of Aboriginal cultural heritage will be identified prior to commencement of works and will be managed in conjunction with the relevant Aboriginal party.

## Weed management

GAWB appreciates that certain weeds pose a significant problem for some landholders due to their impact on agricultural productivity or toxicity to stock. The cost of weed control is understood and GAWB is aware that weeds can be spread through the movement of machinery and vehicles that may transport plant material.

GAWB has met with landowners to determine requirements for each property in relation to weed management. Information has also been sought from relevant State and Local Government departments responsible for weed management in the local area. Measures used to minimise the impact of technical investigations on a property may include:

- Discuss with landowners the level of weed infestation and preferred method of control on their property.
- Prioritise technical investigations to visit relatively 'weed free' properties first, where possible.
- Keep vegetation disturbance to a minimum and not clear any vegetation or transport vegetation from one property to another.
- Use designated roads and access tracks wherever possible – personnel will avoid driving through vegetated areas.
- Ensure wheels, tyres, the interior of vehicles and other vehicle and machinery parts are free of obvious plant material and seeds before leaving each property.
- Ensure clothes and shoes are cleaned of obvious soil, burrs, seeds and other plant material before leaving each property.
- Check machinery, vehicles and clothing before moving onto weed free properties.

GAWB is also discussing protocols for future activities such as construction, operation and maintenance with the Department of Infrastructure, for the proposed Stanwell-Gladstone Infrastructure Corridor.

# GLADSTONE – FITZROY PIPELINE PROJECT



## Technical investigations for the Gladstone-Fitzroy Pipeline

A number of technical investigations are required for the Gladstone-Fitzroy Pipeline to determine a preferred corridor for the pipeline and to assess the environmental impact that the construction and operation of the pipeline would have on its surrounds.

Some of these investigations will be carried out within the boundaries of the proposed pipeline corridor, while others will take place in surrounding areas to assess the potential impact the project may have on areas outside the pipeline corridor.

The types of investigations that the Gladstone Area Water Board (GAWB) and the Project Team expect to carry out during the Gladstone-Fitzroy Pipeline project are described below.

## Environmental Surveys

A number of environmental surveys will be carried out for the Gladstone-Fitzroy Pipeline project. Many of these are observational surveys, carried out on foot. These may include:

- Flora surveys
- Fauna surveys (which may include the trapping and release of certain species)
- Water quality monitoring and surveys
- Testing soils and groundwater

A specific environmental survey that will be carried out during the coming months is a fauna survey focused on a bird called the Capricorn Yellow Chat. The Capricorn Yellow Chat is listed as 'Critically Endangered' under the Commonwealth *Environment and Biodiversity Conservation Act 1999*, while the species is listed as 'Vulnerable' under the *Queensland Nature Conservation Act 1992*.



The Capricorn Yellow Chat

A number of sites located in and around the proposed pipeline corridor have been identified as potential habitats for this bird.

These are areas with tall grasses and sedges that are very wet during the wet season and extremely dry during the dry season. Environmental surveys will be carried out on foot in these sites in the coming months to assess their habitat values.

## Engineering surveys

A number of engineering surveys will be conducted throughout the Gladstone-Fitzroy Pipeline project to assist with locating a preferred pipeline corridor and to provide information to further develop the pipeline's design and construction methodology. These may include:

- Driving the pipeline route to assess engineering challenges and locate obstacles
- Surveying the land and waterways
- Geotechnical investigations (as described below)
- Landscape and visual assessments

## Geotechnical Investigations

Geotechnical investigations will be carried out to determine the physical properties of the soil and rock in the proposed pipeline corridor. This information will be used to assist in determining a preferred pipeline corridor, in the design of the pipeline and its construction method, and to give more certainty to the cost of constructing the pipeline.

A qualified engineering geologist or geotechnical engineer will supervise these investigations for the Gladstone-Fitzroy Pipeline project. They will dig a series of 'test pits' at around 500 metre intervals along the length of the proposed pipeline corridor. Each test pit will be approximately 1.5m wide by 3m long and up to 3m deep and will be excavated using a backhoe. A test pit will take approximately 45 minutes to 1 hour to complete. During this time the time field staff will excavate, log, sample and backfill the site. Later in the investigation phase, boreholes will also be drilled at key sites, such as major infrastructure points (i.e. roads, rail) and watercourse crossings.

Representatives from the relevant Aboriginal parties will be present on site during the excavation of test pits. This person will monitor excavation activities for items of Aboriginal cultural heritage.

The Project Team recognises the impact of these investigations on properties and will work with landowners to determine appropriate locations for test pits on each property. The Project Team will also discuss requirements that landowners may have in relation to the geotechnical investigations, such as weed management, ensuring the security of gates, etc.

## Cultural Heritage Surveys

Cultural Heritage surveys will also be undertaken for the Gladstone-Fitzroy Pipeline project in accordance with the *Aboriginal Cultural Heritage Act 2003*. Relevant Aboriginal parties will be involved in assessing the pipeline corridor for Aboriginal cultural heritage. These studies may include:

- Walking/driving the pipeline corridor to assess its cultural heritage significance
- Involvement in other pipeline investigations to assess cultural heritage significance (such as the geotechnical investigations described above)



# GLADSTONE – FITZROY PIPELINE PROJECT



## Project overview & activities

**The Gladstone-Fitzroy Pipeline project will include an underground pipeline, an intake, a water treatment plant, pump stations and storages along the 115km route. Further information is available in GAWB's Initial Advice Statement and other public submissions.**

## Central Queensland water projects

GAWB was announced as the proponent for the Gladstone-Fitzroy Pipeline project in 2007. To gain access to secure water supplies, GAWB also needs timely construction of additional regulation infrastructure in the lower Fitzroy River. A consortium of GAWB, SunWater, Rockhampton City Council and Livingstone Shire Council was announced as the proponent for the weir projects. 🐟

## Route selection

While the details of the Gladstone-Fitzroy Pipeline route are not yet finalised, it is anticipated that the majority of its length will run within the proposed Stanwell-Gladstone Infrastructure Corridor (SGIC). The SGIC is a State Government initiative to coordinate infrastructure in the region. It was publicly notified in 2006, with subsequent consultation in mid 2007.

To the north, commencing at the Fitzroy River, GAWB will be seeking a grant of easement to connect with the SGIC. At the southern end, the pipeline will continue through the Gladstone

State Development Area (GSDA) to connect with GAWB's existing water infrastructure. GAWB is examining land acquisition alternatives in these areas.

GAWB has been working closely with the community, local councils and industry over recent months in carrying out technical investigations and gathering feedback to locate a preferred pipeline corridor. This feedback and the results of preliminary investigations are being considered in determining the route for the proposed pipeline. 🐟

## GAWB selects contractor for Early Contractor Involvement

GAWB recently called for tenders for contractor and design teams to develop a detailed, costed design for the Gladstone-Fitzroy Pipeline project under an Early Contractor Involvement (ECI) contract. Despite the current tight conditions of the infrastructure market, seven tenders were received, surpassing government and industry expectations and reaffirming the significance of the pipeline project.

The quality of the tenders was high and following a rigorous selection process, GAWB is now finalising matters with a preferred contractor. GAWB is very pleased with the interest shown in the region and believes the flexible, cooperative style of working required under the ECI contract will ensure good outcomes for customers and the community. 🐟

## Environmental Impact Statement

The Coordinator-General has declared the Gladstone-Fitzroy Pipeline project a 'significant project', requiring an Environmental Impact Statement (EIS).

The EIS will examine the environmental, social and economic implications of the project and is expected to be completed and released to the public in early to mid 2008. At this point, any member of the public will have the opportunity to submit formal comment on the EIS, within a 30 day public comment period, before it is assessed by the Queensland and Commonwealth governments.

A team of experts has been working since early 2007 on studies that will be used to formulate the EIS. 🐟

## Community consultation

Since announcing the project in June 2007, GAWB has been in close consultation with landowners, local councils and industry. This will continue as GAWB prepares the project's EIS before its release to the community in early to mid 2008 for a 30 day formal public comment period.

If you have a question about the project, please do not hesitate to contact a member of the project team. 🐟

**Phone:** 1800 771 185

**Email:** [info@gladstone-fitzroypipeline.com.au](mailto:info@gladstone-fitzroypipeline.com.au)

**Post:** Reply Paid PO Box 110  
Gladstone Q 4680

# GLADSTONE – FITZROY PIPELINE PROJECT



## Project timeline

### **November 2004 GAWB releases Strategic Water Plan**

A collaborative effort between GAWB, government, industry and the community, the plan sets out GAWB's strategic options to best suit the region's water needs.

### **November 2006 Public notification of the SGIC**

The Stanwell-Gladstone Infrastructure Corridor (SGIC) is a state government initiative to coordinate infrastructure in the region. Further community consultation occurred in mid 2007.

### **December 2006 CQRWSS released**

The Central Queensland Regional Water Supply Strategy (CQRWSS) was initiated in 2004 in response to prolonged severe drought in Central Queensland and involved extensive consultation with stakeholders. A reservation of 30,000 ML/a from the Fitzroy River was made for GAWB and a pipeline between Gladstone and the Fitzroy River was identified as part of the regional solution.

### **June 2007 Initial discussions with landowners**

GAWB met with many landowners within the pipeline investigation corridor to discuss the project and access requirements.

### **January – October 2007 Definition of project requirements**

GAWB worked with its staff, customers and advisors to understand the nature of its requirements to secure its water supplies.

### **September – October 2007 Terms of Reference and public comment period**

The final Terms of Reference (ToR) for the project's Environmental Impact Statement (EIS) were issued to GAWB by the Coordinator-General on 30 October 2007, after a four-week public comment period. Submissions were received from a number of government agencies and community organisations. The final ToR, which are essentially the 'rule book' for the preparation of the EIS, outlined requirements for GAWB to consider visual, noise and environmental impacts of the project, amongst other things.

### **August – December 2007 Fieldwork**

Geotechnical, environmental and other investigations carried out as part of the project's EIS

**CURRENT  
STATUS**

### **December 2007 – July 2008 Design cost development**

GAWB initiated the major design phase of the project, which will commence by refining infrastructure layouts and ultimately develop design details and an estimate of the total construction cost.

### **Early – mid 2008 EIS released to the public for comment**

The EIS will examine the social, environmental and economic impacts associated with the project. The EIS is expected to be released in early to mid 2008, when it will be subject to a 30 day public comment period before being assessed by the Queensland and Commonwealth governments.

### **Coordinator-General's decision**

At the completion of the EIS process, the Coordinator-General will issue a report to GAWB, evaluating the EIS and providing a decision on the project. The report will outline any conditions that will apply to the development approval.

### **Earliest pipeline operation – 2010**

For more information about GAWB's Gladstone-Fitzroy Pipeline project, visit [www.gladstone-fitzroypipeline.com.au](http://www.gladstone-fitzroypipeline.com.au) or phone 1800 771 185

# GLADSTONE – FITZROY PIPELINE PROJECT



## Two sources, one scheme

**The Gladstone-Fitzroy Pipeline project will interconnect seamlessly with GAWB's existing assets, with many efficiencies flowing as a result:**

- A geographically spread scheme reduces both hydrology and asset risks (e.g. drought, flood, fire, cyclone, earthquake, terrorism, mechanical failure, power loss, dam safety)
- With one scheme, smeared prices keep the region attractive for current and future users
- Tens of millions of dollars can be saved because a new Aldoga storage would need to be four times the size if there was no integrated backup from Awoonga Dam
- Operational staff can be part-time at the proposed Water Treatment Plant when control and monitoring systems are integrated, significantly reducing costs and resourcing difficulties and improving workforce efficiency
- Water quality will be comparable from either source and quality control, monitoring and notifications to maximise customers' output efficiency is possible in one scheme
- Optimisation of the whole operations, under GAWB's advanced commercial frameworks, will provide the best outcome for the region

## Securing the Region's Water Supply

While the Gladstone region has sufficient water for the short-term, low inflows to Awoonga Dam since 2003's drought-breaking Cyclone Beni and strong industrial growth have signalled a need to pursue a second source of water to secure a reliable, long-term water supply for the region.

By preparing for the Gladstone-Fitzroy Pipeline now - locating a preferred corridor, designing the pipeline and gaining appropriate Government approvals, GAWB will be ready to commence construction of the pipeline as soon as low dam levels or increased demand trigger the need to start construction.

## GAWB's Strategic Water Plan

The Strategic Water Plan, released in November 2004, was a collaborative effort between GAWB, government, industry and the community and sets out GAWB's strategic options to best meet the region's water needs.

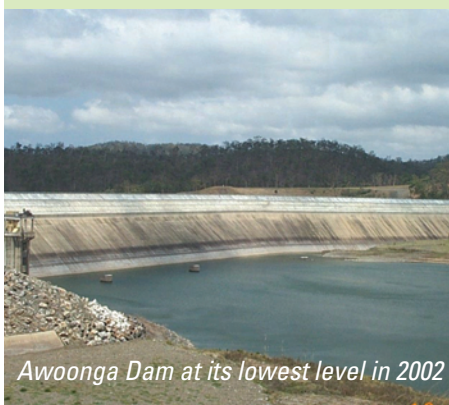
The plan considered all available water sources and analysed them in terms of cost, quality, environmental and social impacts and reliability. Options such as water restrictions, recycling, new dams and weirs, industrial cooling conversions and desalination were considered.

With recycling opportunities all implemented in Gladstone, and water being used efficiently since the last drought, the Strategic Water Plan concluded that a pipeline supplying 30,000 ML/a from the Fitzroy River was the preferred option.

## Central Queensland Regional Water Supply Strategy

The Central Queensland Regional Water Supply Strategy (CQRWSS) was initiated in response to prolonged severe drought in Central Queensland, from which it became evident that a regional, whole-of-government approach was the most efficient way of meeting water supply challenges.

A reservation of 30,000 ML per annum (ML/a) from the Fitzroy River was made for GAWB in the CQRWSS. A pipeline between Gladstone and the Fitzroy River was also part of the regional solution set out in the 50 year strategy.



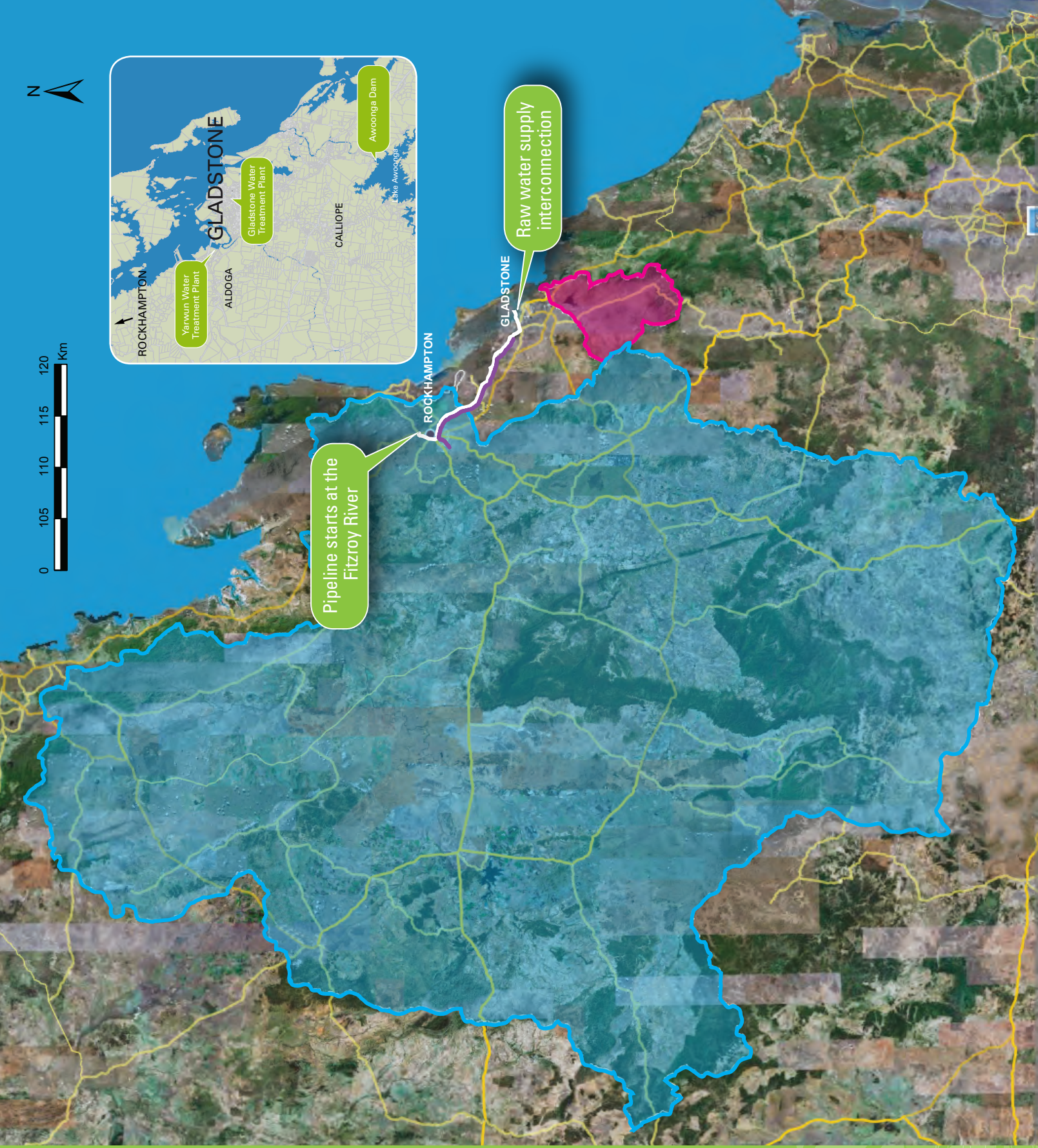
*Awoonga Dam at its lowest level in 2002*

## GAWB's revised Drought Management Plan

GAWB recently released its revised Drought Management Plan (DMP) after revisiting the way it calculates worst-case inflow predictions for Awoonga Dam. The DMP explains how GAWB must assess possible drought conditions, and when it must make notifications and take actions in response.

With the revised inflow assumptions, the region is facing a situation where, if additional water supply options are not investigated, there is the possibility of running out of water by 2011.





## KEY

- Gladstone-Fitzroy Pipeline
- Stanwell-Gladstone Infrastructure Corridor
- Boyne Catchment Area
- Fitzroy Catchment Area

For more information about GAWB's Gladstone-Fitzroy Pipeline project:

**Phone:** 1800 771 185

**Email:** [info@gladstone-fitzroypipeline.com.au](mailto:info@gladstone-fitzroypipeline.com.au)

**Post:** Reply Paid PO Box 110  
Gladstone Q 4680

**Website:** [www.gladstone-fitzroypipeline.com.au](http://www.gladstone-fitzroypipeline.com.au)



# GLADSTONE – FITZROY PIPELINE PROJECT



Water treatment plant and other  
pipeline infrastructure

**The Gladstone-Fitzroy Pipeline project will include an underground pipeline, an intake, a water treatment plant, pump stations and storages along the 115km pipeline route. Further information is available in GAWB's Initial Advice Statement and other public submissions.**

**The Gladstone Area Water Board (GAWB) is currently investigating suitable site options for this infrastructure and is continuing discussions with landowners so that final decisions can be made in 2008.**

## Environmental Impact Statement

The Coordinator-General has declared the Gladstone-Fitzroy Pipeline project a 'significant project', requiring an Environmental Impact Statement (EIS).

The EIS will examine the environmental, social and economic implications of the project and is expected to be completed and released to the public in early 2008. At this point, any member of the public will have the opportunity to submit formal comment on the EIS, within a four-week public comment period, before it is assessed by the Queensland and Commonwealth governments.

A team of experts has been working since early 2007 on studies that will be used to formulate the EIS. ↘

## Why does GAWB need a water treatment plant?

- The turbidity level (or cloudiness) of the Fitzroy River water is on average about 100 times higher than that of Awoonga Dam's water.
- If water flowing through the pipeline is untreated, the pipeline would not be able to operate efficiently, requiring frequent cleaning, consuming more energy and producing more greenhouse gas emissions
- After the water is treated it will be of a similar quality to Awoonga Dam's water, allowing it to be mixed into the Gladstone network. However, it will not be drinking water standard.

## Where will the water treatment plant be located?

- GAWB is currently finalising its review of options for a preferred site, subject to approvals.
- There are very specific characteristics the site needs to have for the treatment plant to operate effectively (including power supply, elevation etc.) which is why there are limited suitable sites.

## How big will the water treatment plant be?

- It is expected that the water treatment plant will be smaller than other local treatment plants.
- Subject to final design, the main structures are expected to occupy an area between four and five hectares in size – the whole site will be larger to provide access, buffers and other facilities.

**For more information about GAWB's Gladstone-Fitzroy Pipeline project, visit [www.gladstone-fitzroypipeline.com.au](http://www.gladstone-fitzroypipeline.com.au) or phone 1800 771 185.**

# GLADSTONE AREA WATER BOARD



## Key assets

### Awoonga Dam

- Fourth largest Dam in Queensland. The full capacity of Lake Awoonga is 777,000ML (1.4 times the water in Sydney Harbour)
- GAWB currently has an annual allocation of 70,000ML to be increased to 78,000ML when the dam fills completely (based on enough water in the dam to supply Gladstone for 10 years)
- The dam structure was raised from 30m (283,000ML) to its current height of 40m in 2002
- Cyclone Beni broke the 2003 drought, raising the water level in the dam by 10m in two days. Overall the water level rose from 20.8m on the 4th of February 2004 to 34.9m on the 29th of March 2004, with the inclusion of run off and follow up rain. This equates to a rise from 7.4% of the 40m Full Supply Level to 62.3%, or an increase from 57,803ML to 484,074ML in water stored.

### Gladstone-Fitzroy Pipeline

- 115km long and approximately 1m in diameter
- Capacity of up to 30,000ML per annum
- A Water Treatment Plant will produce raw water (non-potable) of comparable quality to Awoonga Dam
- Pump stations to be located at the river intake, the Water Treatment Plant and at Raglan, operating at 20-200m pressure
- Storages to be located at the Water Treatment Plant, Raglan and the main storage at Aldoga



### Gladstone Water Treatment Plant

- Consists of two parallel treatment processes which merge to a common on site storage before the water is pumped to distribution reservoirs
- Plant One is a conventional treatment process, while Plant Two uses Dissolved Air Flotation (DAF) which is more efficient at removing high turbidity and algae
- Originally built in 1971, the process consisted of just two clarifiers and four filters, now the process includes; two clarifiers, three DAF units, and 12 filters along with an additional pump station, chemical storage, system control and waste removal infrastructure
- Combined maximum output is over 50ML per day, while the average daily supply last calendar year was 26.5ML per day

### Yarwun Water Treatment Plant

- Built in 1989
- Located 10km north of Gladstone, it primarily supplies industrial customers in the Yarwun Industrial Area
- Currently designed to produce 3.6ML per day, however current peak day demands frequently exceed this capacity
- It is the subject of a \$2 million overhaul in 2007/09 to bring capacity to 5ML per day, with the added benefits of:
  - increasing safety – changing from chlorine gas to liquid solution for disinfection, and improved chemical storage and handling facilities
  - increasing automation – introducing control, allowing remote operation of the plant
  - upgrading technology – upgrading the clarifiers and filters along with the control systems
  - improving environmental performance by reducing water wastage
  - introducing water quality online monitoring – for key parameters (pH, turbidity and chlorine) to aid automatic control of the plant





## Customers

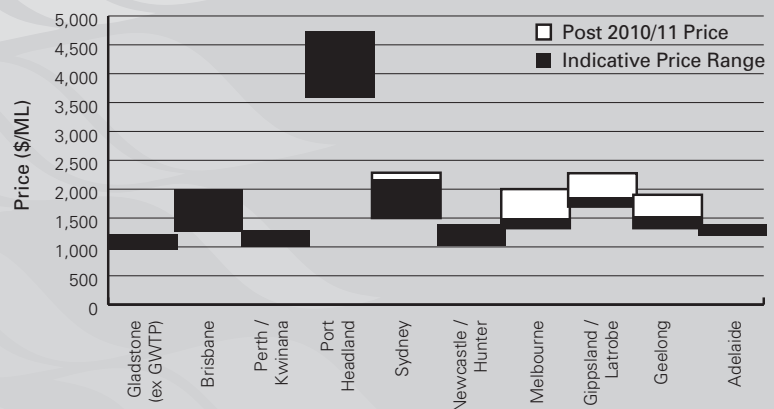
- Queensland Alumina Ltd – the world's largest alumina production at 3.9 million tonnes per annum
- Rio Tinto Yarwun Alumina Refinery – world class alumina production at 1.4 million tonnes per annum and ranked highly in the world for cost efficiency. The only alumina refinery built in the western world in the last 20 years
- Boyne Smelters Ltd – world class aluminium smelter and Australia's largest at 540,000 tonnes per annum
- Orica Yarwun Chemicals Complex – the world's largest ammonium nitrate producer at 600,000 tonnes per annum and world's third largest producer of sodium cyanide at 60,000 tonnes per annum
- Cement Australia – largest cement plant in the southern hemisphere at 1.6 million tonnes per annum
- Three power stations – the Callide Power Stations owned by CS Energy and Callide Power Management as well as Gladstone which is the single largest power station in Queensland with 1,680 MW installed capacity
- Gladstone City Council and Calliope Shire Council – population of approximately 50,000, experiencing rapid growth.

## Prices

The current price of a 1,000ML per annum raw water supply at the Gladstone State Development Area (in 2010/11 dollars) is approximately \$690/ML.

Based on estimated data and assumptions about demand, calculations have provided indicative future prices. These calculations indicate that if an augmentation is drought-triggered, the 2010/11 price rises to approximately \$1,170/ML.

Comparison of Estimated 2010/11 Prices Treated Water



## Source Selection

Based on the cost estimates provided by GAWB's engineering consultants, Arup, a pipeline from the Fitzroy River will result in lower prices to customers than an equivalent capacity desalination plant.

For both capacity increments modelled (15GL p.a. and 30GL p.a.), the pipeline project has lower capital costs and lower operating costs than the equivalent capacity desalination plant. That is, for capacities of this order and all other things

being equal, there is no scenario where a desalination plant produces water at a lower expected price than a pipeline project with the same capacity.

**For more information about GAWB's Gladstone-Fitzroy Pipeline project, visit [www.gladstone-fitzroypipeline.com.au](http://www.gladstone-fitzroypipeline.com.au) or phone 1800 771 185**

# CONTACT CARD

**CONTACT CARD**  
**GLADSTONE – FITZROY PIPELINE PROJECT**

**IF UNATTENDED, PLEASE LEAVE A MESSAGE AND A MEMBER OF THE  
PROJECT TEAM WILL RETURN YOUR CALL AS SOON AS POSSIBLE**

---

**Free Call 1800 771 185**

Postal Address: Reply Paid 110, Gladstone BC, QLD 4680

Facsimile: 07 4972 5632

E-mail: [info@gladstone-fitzroypipeline.com.au](mailto:info@gladstone-fitzroypipeline.com.au)

Web site: [www.gladstone-fitzroypipeline.com.au](http://www.gladstone-fitzroypipeline.com.au)

WEBSITE

# GLADSTONE – FITZROY PIPELINE PROJECT

[Home](#) [About GAWB](#) [About the Pipeline](#) [Pipeline Location](#) [Resources](#) [Contact](#)

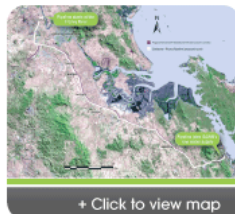
## Securing the region's water supply

### The Gladstone-Fitzroy Pipeline

Gladstone Area Water Board (GAWB) has commenced technical investigations on its Gladstone-Fitzroy Pipeline project to ensure a reliable supply of water for the region. Up to 30,000ML of water each year will be drawn from the Fitzroy River to provide a dual water source for GAWB's supply network.

While the Gladstone region has sufficient water for the short-term, low inflows to Awoonga Dam since 2003's drought-breaking Cyclone Beni and strong industrial growth have signalled a need to pursue a second source of water to secure a reliable, long-term water supply for the region.

By preparing for the Gladstone-Fitzroy Pipeline now - locating a preferred corridor, designing the pipeline and gaining appropriate Government approvals, GAWB will be ready to commence construction of the pipeline as soon as low dam levels or increased demand trigger the need to start construction.



[+ Click to view map](#)

The pipeline will run underground from the Fitzroy River via an easement, through the proposed **Stanwell – Gladstone Infrastructure Corridor (SGIC)** and **Gladstone State Development Area (GSDA)**, before finally joining GAWB's raw water reticulation system.

The Gladstone – Fitzroy Pipeline is a key outcome from the 2006 **Central Queensland Regional Water Supply Strategy**, a strategy developed by the State Government, with co-operation from local councils, regional water supply bodies and other local stakeholders.

[To register for email updates, click here](#)

#### About this website

The Gladstone-Fitzroy Pipeline website contains information about the project and will be updated regularly to give you access to the latest information about the progress of the project.

#### News

**8.07.08**  
\$10 million from Australian Government for pipeline preparations

**27.05.08**  
New project resources available  
- Project Update 2

**6.12.07**  
New project resources available  
- Project Update 1  
- Project timeline  
- Fact sheet



#### Quick Links

[Stanwell – Gladstone  
Infrastructure Corridor](#)

[Gladstone  
State Development Area](#)

[Central Queensland  
Regional Water Supply Strategy](#)



## GLADSTONE – FITZROY PIPELINE PROJECT

[Home](#) [About GAWB](#) [About the Pipeline](#) [Pipeline Location](#) [Resources](#) [Contact](#)

### Gladstone-Fitzroy Pipeline Resources

#### Gladstone-Fitzroy Pipeline Project Update

**NEW! Project Update 2 - May 2008** (PDF 1.3Mb file)

The Project Update is designed to keep you informed of all activities and milestones associated with the Gladstone-Fitzroy Pipeline project. Included in the latest Project Update is information about GAWB's continued preparations for the Gladstone-Fitzroy Pipeline despite recent rainfall, triggers and timing of the pipeline construction, information on the environmental approvals process, a diagram of the pipeline and its associated infrastructure, route and site selection update and information about the region's water catchments and storage capacity.

**Project Update 1 - December 2007** (PDF 1.5Mb file)

Included in this Project Update is information about GAWB's revised Drought Management Plan, the recent release of the final Terms of Reference for the EIS, route selection progress, Early Contractor Involvement, community consultation and baseline studies.

#### Gladstone-Fitzroy Pipeline Project Timeline

**Project Timeline** (PDF 308k file)

#### Gladstone-Fitzroy Pipeline Fact Sheets

Fact Sheet – **Pipeline Infrastructure** (PDF 280k file)

Fact Sheet – **Project Overview** (PDF 1.2Mb file)

#### The Central Queensland Regional Water Supply Strategy

The Central Queensland Regional Water Supply Strategy was initiated in response to prolonged severe drought in Central Queensland, from which it became evident that a regional, whole-of-government approach was the most efficient way of meeting the water supply challenges.

The strategy is an adaptive, long-term statement, outlining equitable and timely solutions to the urban, industrial/mining and agricultural water needs of the Central Queensland region. Through a tailored, regional approach, the strategy has been designed to achieve optimal social, environmental and economic outcomes for the region. The strategy area, covering 153,000 square kilometres, includes Queensland's Fitzroy River Basin and the coastal streams of the Capricorn Coast and the Gladstone region.

**[Click here to view the Central Queensland Regional Water Supply Strategy](#)**

#### Gladstone Area Water Board Strategic Water Plan

GAWB's Strategic Water Plan (2004) looked at the full range of possible options, from desalination, to demand management, to new dams and weirs. The Gladstone-Fitzroy Pipeline was identified as the preferred option, taking into consideration environmental and social impacts, reliability and quality of supply, and cost.

**[Click here to view the Gladstone Area Water Board's Strategic Water Plan](#)**

To register for  
email updates,  
[click here.](#)

## GLADSTONE – FITZROY PIPELINE PROJECT

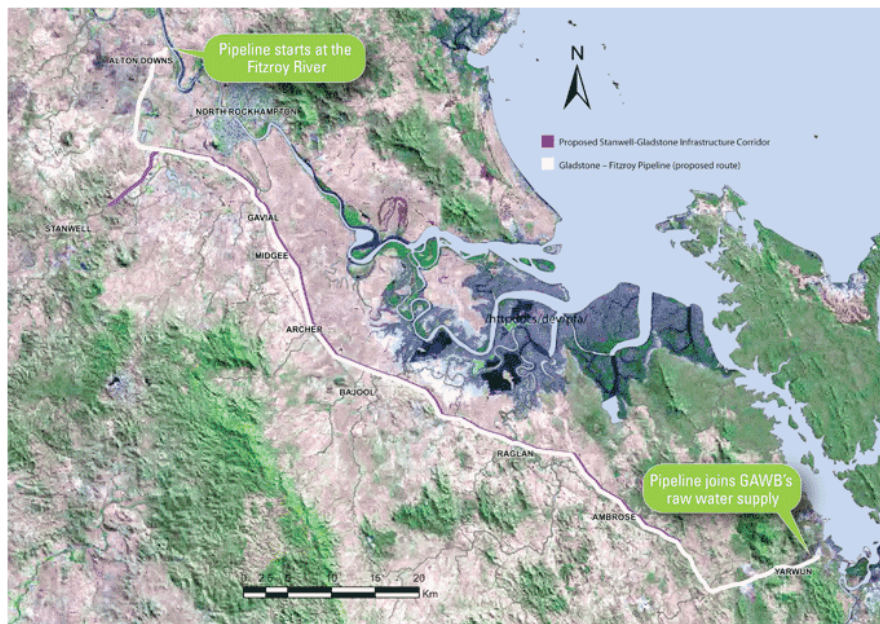
[Home](#) [About GAWB](#) [About the Pipeline](#) [Pipeline Location](#) [Resources](#) [Contact](#)

### Pipeline location

It is likely that the Gladstone – Fitzroy Pipeline will run through the proposed **Stanwell – Gladstone Infrastructure Corridor** (SGIC), which is currently under investigation by the Department of Infrastructure. While the SGIC has not yet been declared by the State Government, the proposal has been in consultation since 2006.

At the northern end, commencing at the Fitzroy River, GAWB will be seeking a grant of easement to connect with the SGIC and will examine the use of existing corridors and easements where possible. At the southern end, the pipeline will continue through the **Gladstone State Development Area** (GSDA) to connect with GAWB's existing water infrastructure.

GAWB will work closely with the community, local councils and industry in the coming months to carry out technical investigations and gather feedback to locate a preferred pipeline corridor.



## GLADSTONE – FITZROY PIPELINE PROJECT

[Home](#) [About GAWB](#) [About the Pipeline](#) [Pipeline Location](#) [Resources](#) [Contact](#)

### Preparing for the Gladstone-Fitzroy Pipeline

The Gladstone – Fitzroy Pipeline will connect the Fitzroy River with GAWB's raw water supply network through approximately 110 kilometres of underground pipeline, linking two major sources of water for the region.

The Gladstone – Fitzroy Pipeline is a key outcome from the 2006 **Central Queensland Regional Water Supply Strategy**, a strategy developed by the State Government, with co-operation from local councils, regional water supply bodies and other local stakeholders. GAWB's own 2004 **Strategic Water Plan** also found that the pipeline had the highest combined environmental, social and economic merit when compared to supply options such as desalination, new dams and weirs or further industrial demand management.

The **Central Queensland Regional Water Supply Strategy** reserved up to 30,000 ML per year of water to GAWB from the Fitzroy River to augment the region's water supply, which currently comes from a sole source, Awoonga Dam. This allocation of water allows GAWB to proceed with the pipeline project with certainty. The water would be made available by new pipeline infrastructure in the Fitzroy River.

#### **Initial technical investigations for the pipeline**

GAWB has commenced technical investigations to ensure the project is designed, approved and ready to be built when it is required. While we have sufficient water for the short term, if current low rainfall and industrial growth trends continue, the pipeline could be required as early as 2011. Technical, environmental and cultural heritage investigations have been conducted for the project from mid 2007. These investigations, together with feedback from the community, will allow a preferred pipeline corridor to be determined.

An Environmental Impact Statement (EIS) will then be completed for the preferred corridor in late 2007, for public display and assessment by the Queensland State Government in 2008.

#### **Final EIS Terms of Reference released**

The Department of Infrastructure released the final Terms of Reference for the Gladstone-Fitzroy Pipeline's Environmental Impact Statement (EIS) on 30 October 2007.

To view the final Terms of Reference for the project [click here](#).

## GLADSTONE – FITZROY PIPELINE PROJECT

[Home](#) [About GAWB](#) [About the Pipeline](#) [Pipeline Location](#) [Resources](#) [Contact](#)

### About the Gladstone Area Water Board

On 1 October 2000 GAWB commenced operations as a Category 1 commercialised Water Authority under the Water Act 2000 and is responsible to the Minister for Natural Resources and Water. GAWB supplies water directly to large industrial customers, including the Gladstone City Council and the Calliope Shire Council. These councils then distribute water directly to their ratepayers.

GAWB's primary focus is to supply its customers through commercially responsive and environmentally sustainable business practices. This is achieved through planning, operating and maintaining the infrastructure required to supply water in a sustainable manner, while minimising the impact of its operations on the environment.



[Click to visit the Gladstone Area Water Board Website.](#)



**Gladstone Area  
Water Board**