

Appendix E5.1 Weather data

Rockhampton Aero Weather Data

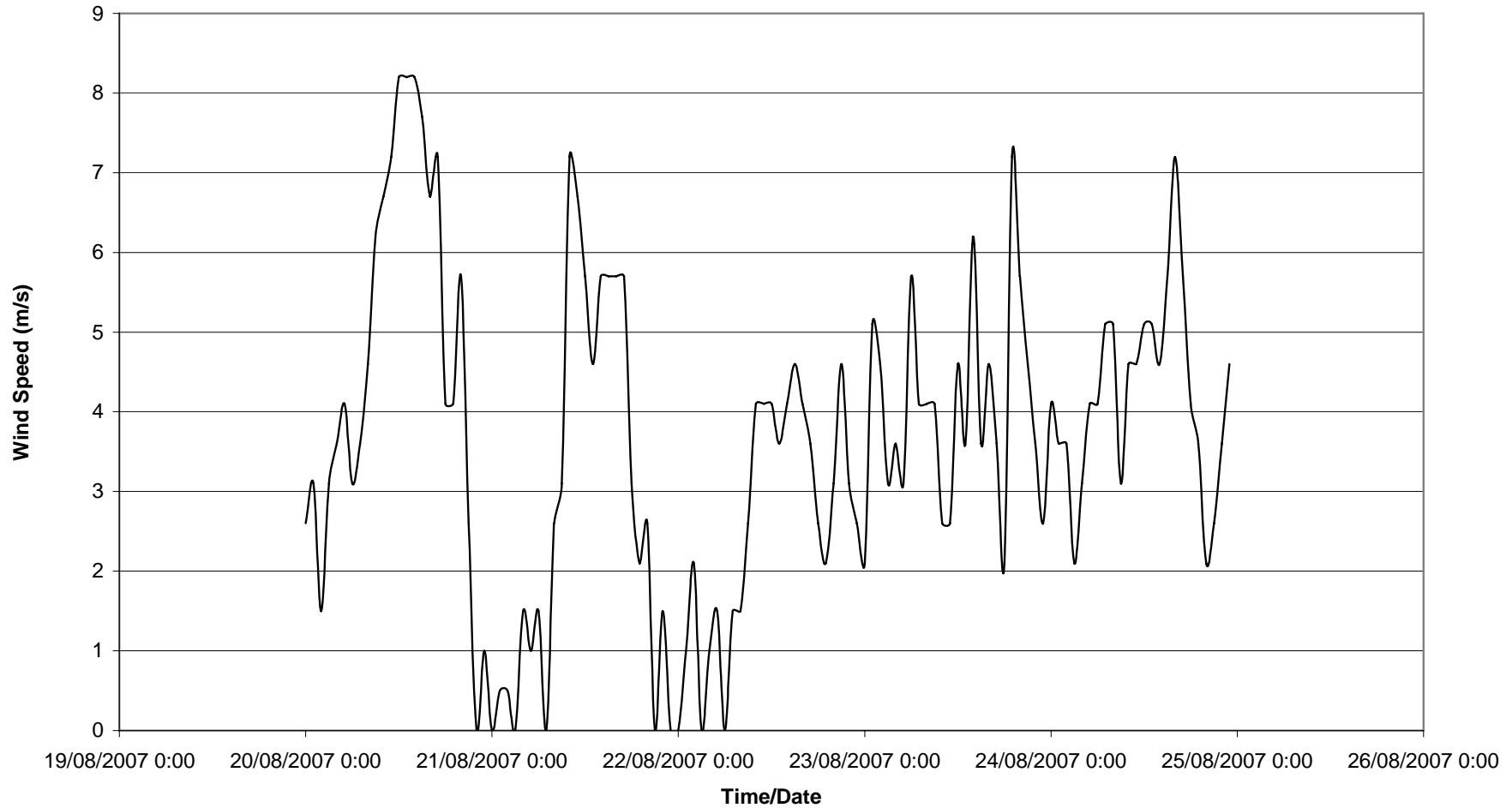


Figure 1 - Wind Speeds recorded at the Rockhampton aero weather station from 20/08/2007 – 25/08/2007

Gladstone Aero Weather Data

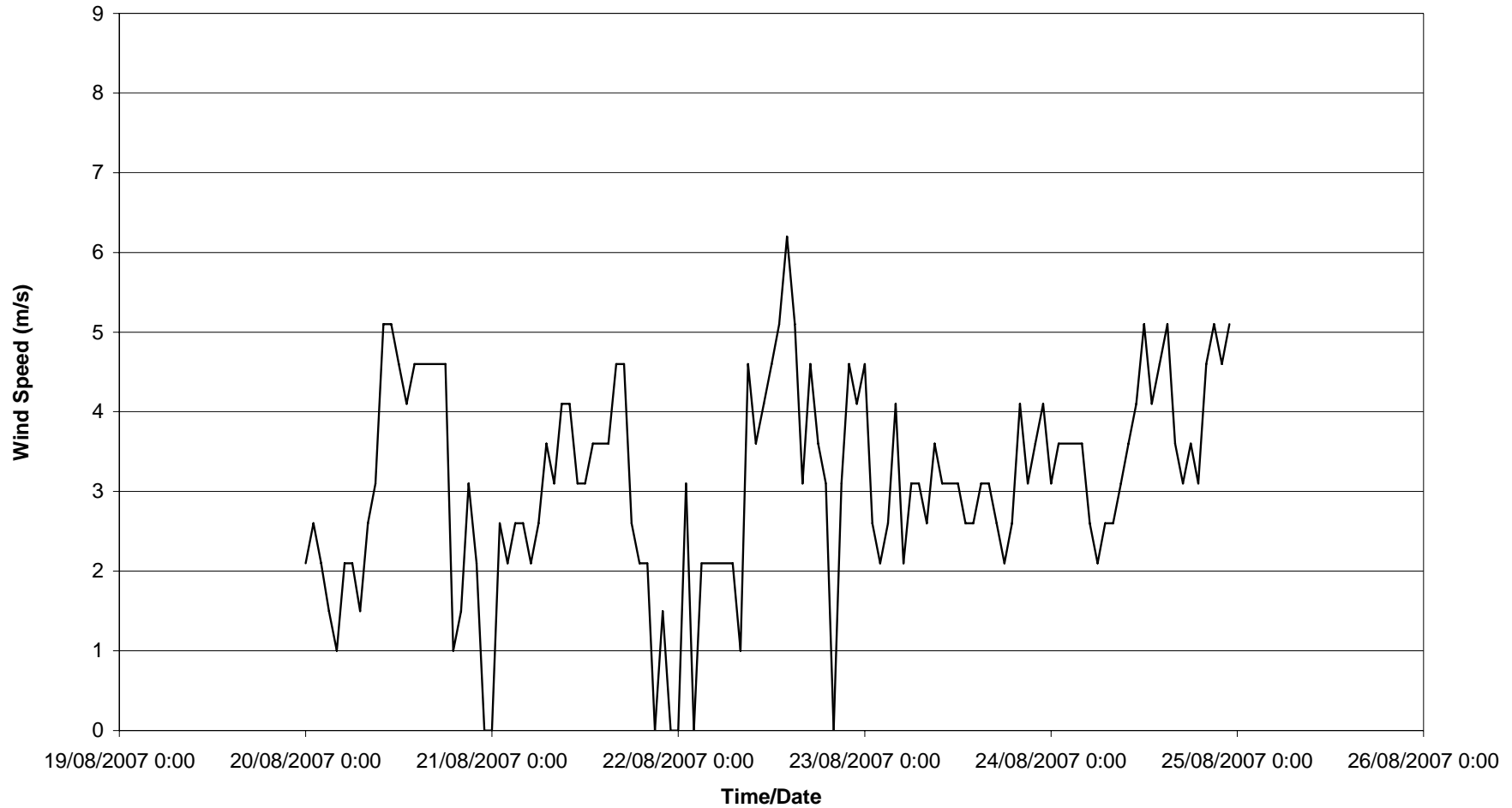


Figure 2 - Wind speeds recorded at the Gladstone aero weather station from 20/08/2007 – 25/08/2007

Appendix E5.2 Unattended Noise Monitoring Results

Logger location
Laurel Bank

Aerial image



Placement of logger on property



Fairy Bower



Raglan



Aldoga



Figure 1 - Locations of unattended noise monitoring

Logger L - Laurel Banks - 21/08/2007

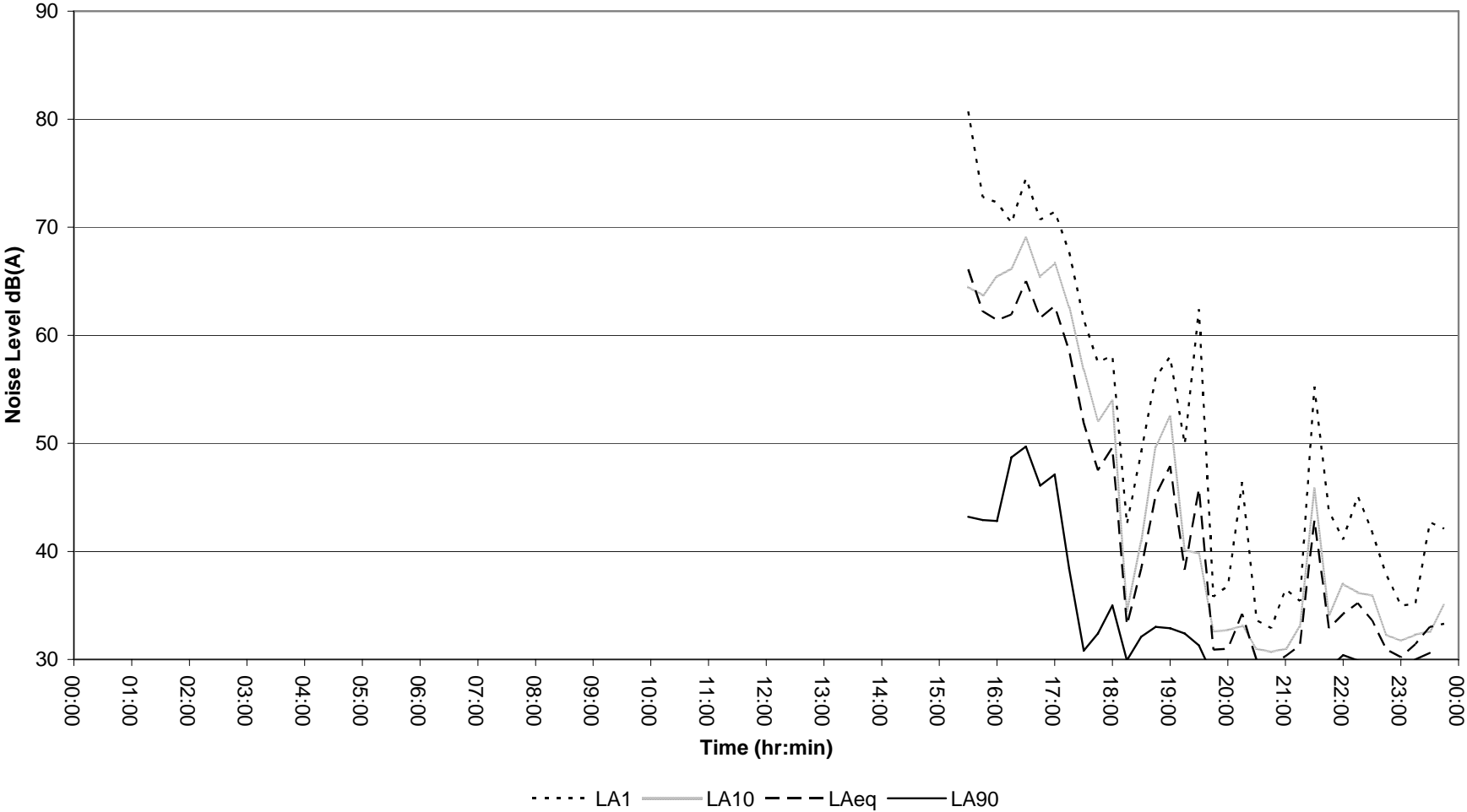


Figure 2 - Daily unattended noise monitoring results for Laurel Bank – Tuesday 21 August 2007

Logger L - Laurel Banks - 22/08/2007

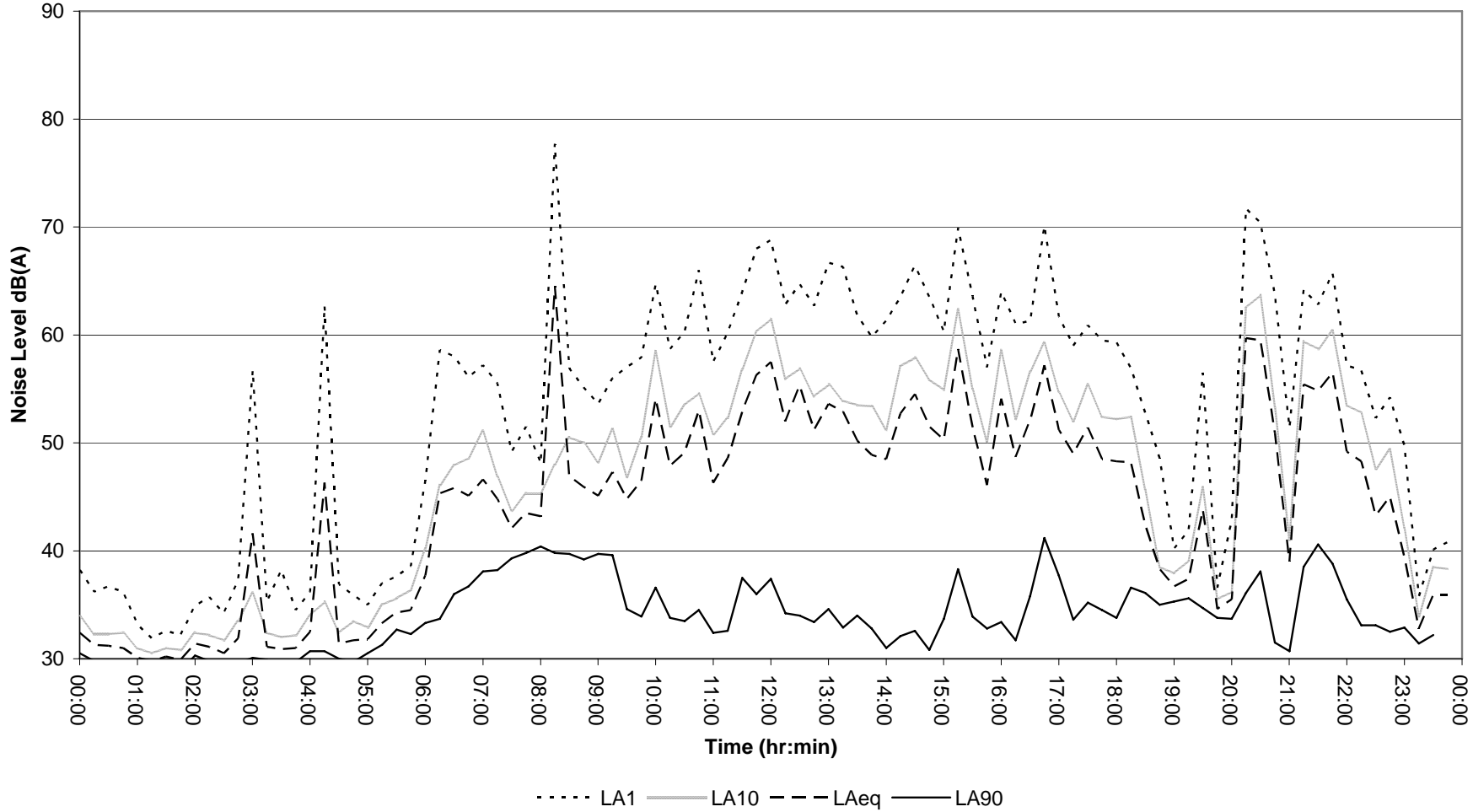


Figure 3 - Daily unattended noise monitoring results for Laurel Bank – Wednesday 22 August 2007

Logger L - Laurel Banks - 23/08/2007

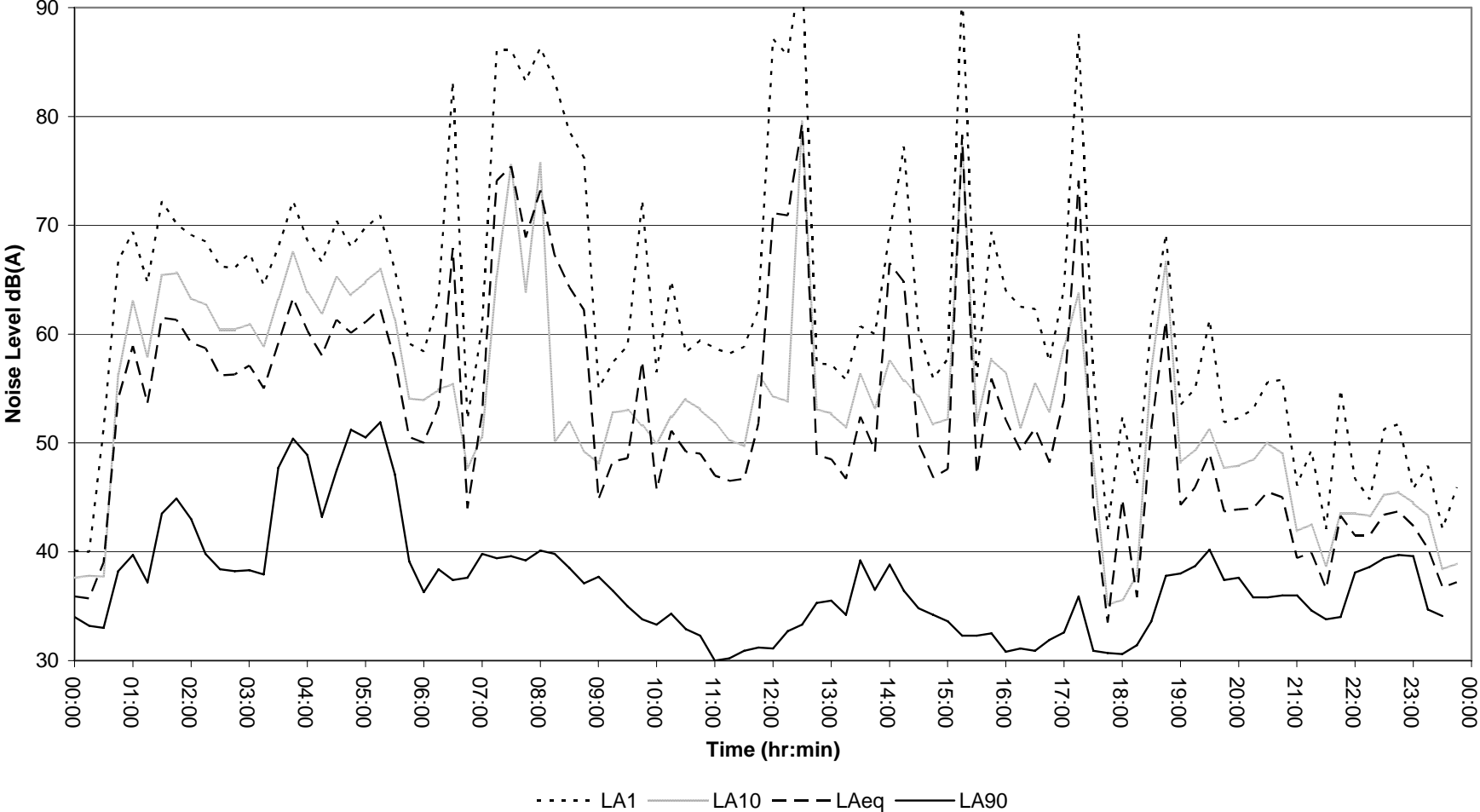


Figure 4 - Daily unattended noise monitoring results for Laurel Bank – Thursday 23 August 2007

Logger L - Laurel Banks - 24/08/2007

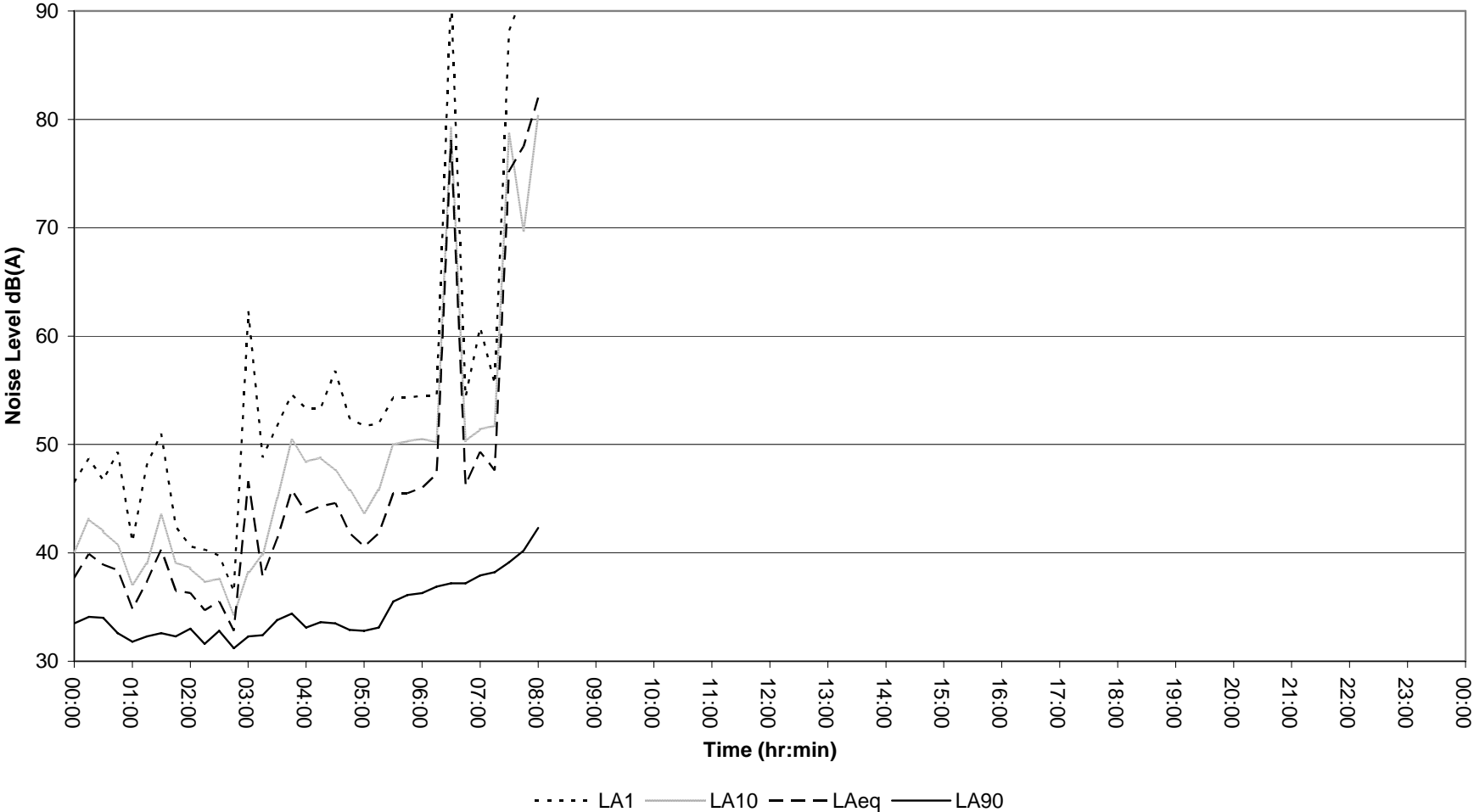


Figure 5 - Daily unattended noise monitoring results for Laurel Bank – Friday 24 August 2007

Logger F - Fairy Bower - 21/08/2007

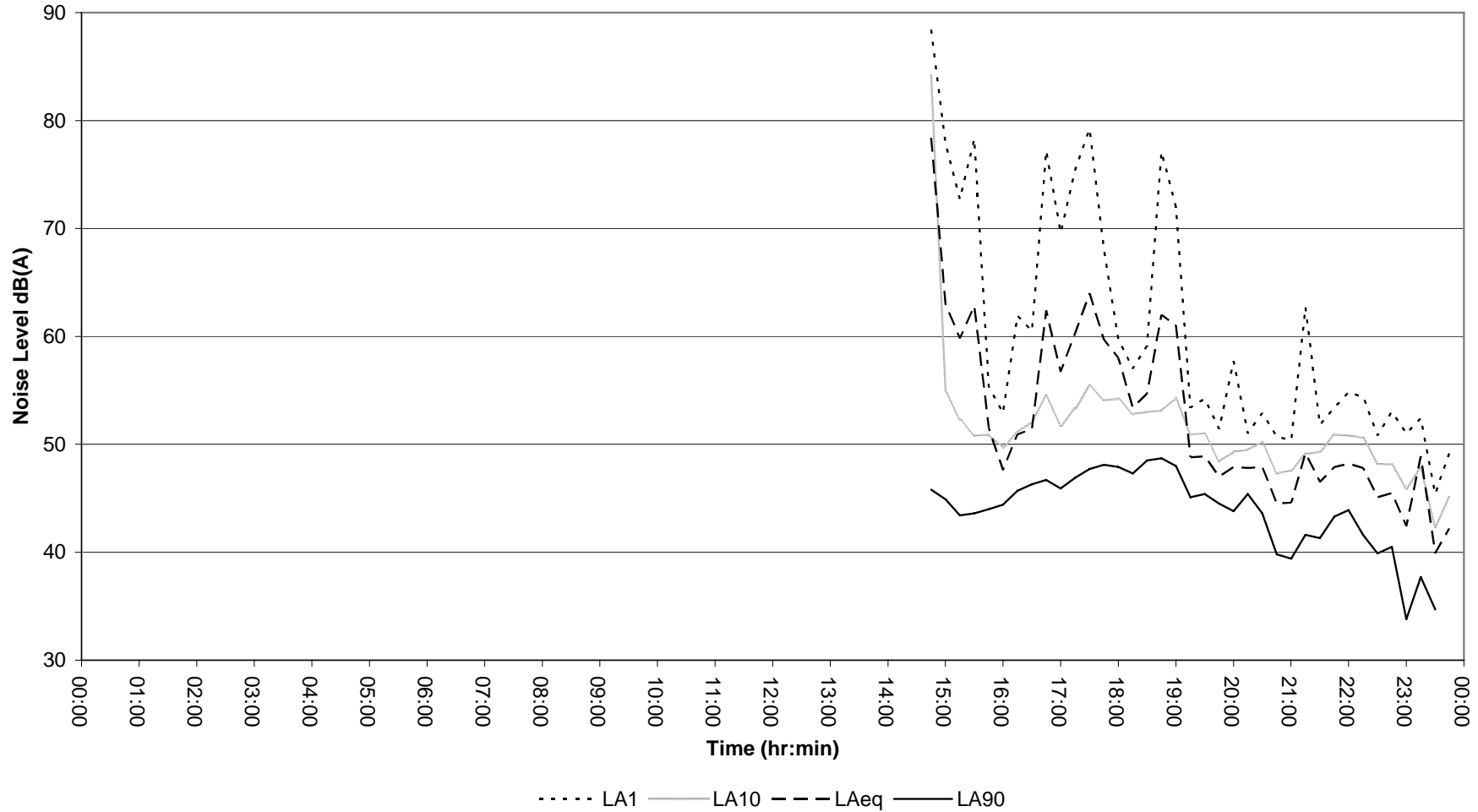


Figure 6 - Daily unattended noise monitoring results for Fairy Bower – Tuesday 21 August 2007

Logger F - Fairy Bower - 22/08/2007

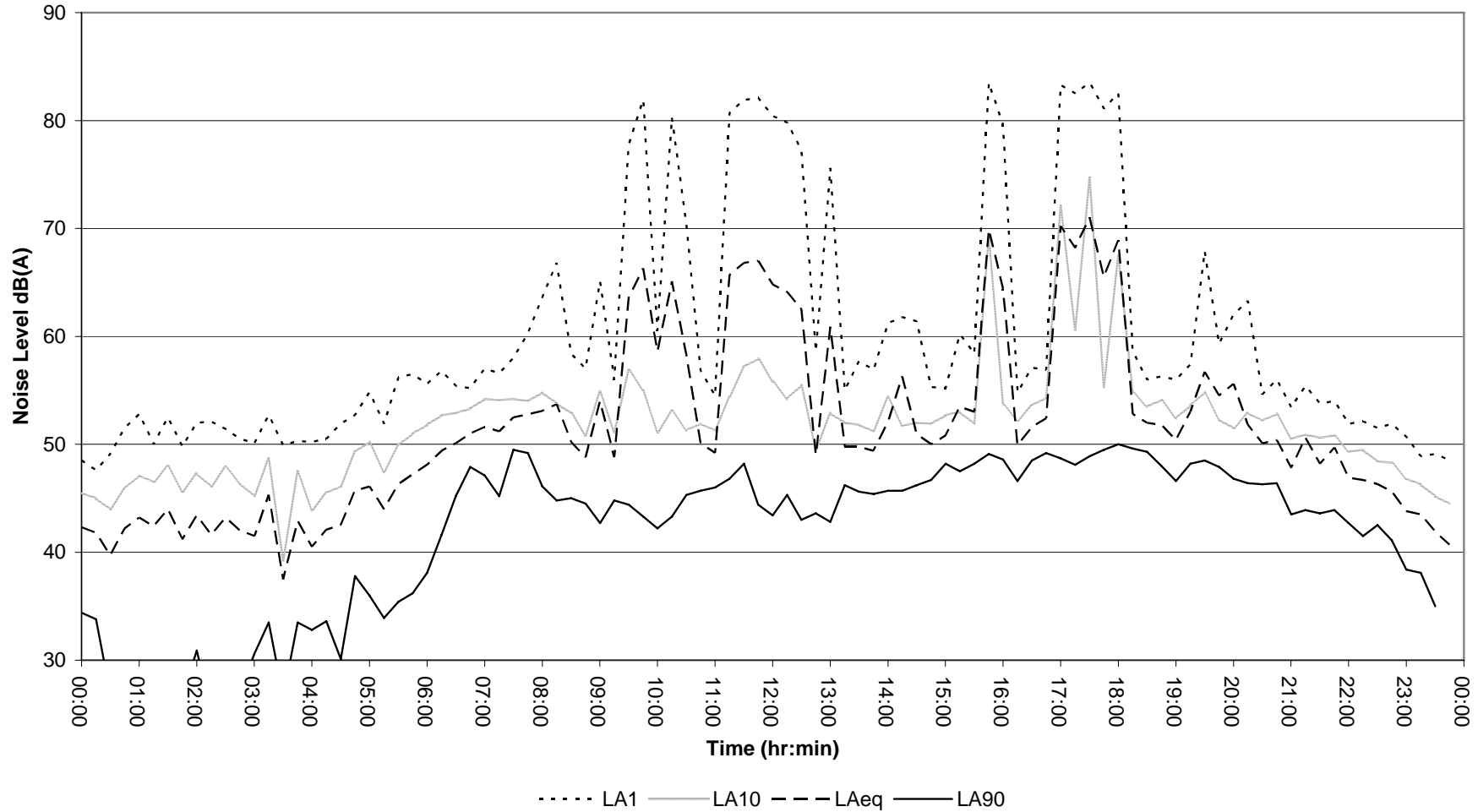


Figure 7 - Daily unattended noise monitoring results for Fairy Bower – Wednesday 22 August 2007

Logger F - Fairy Bower - 23/08/2007

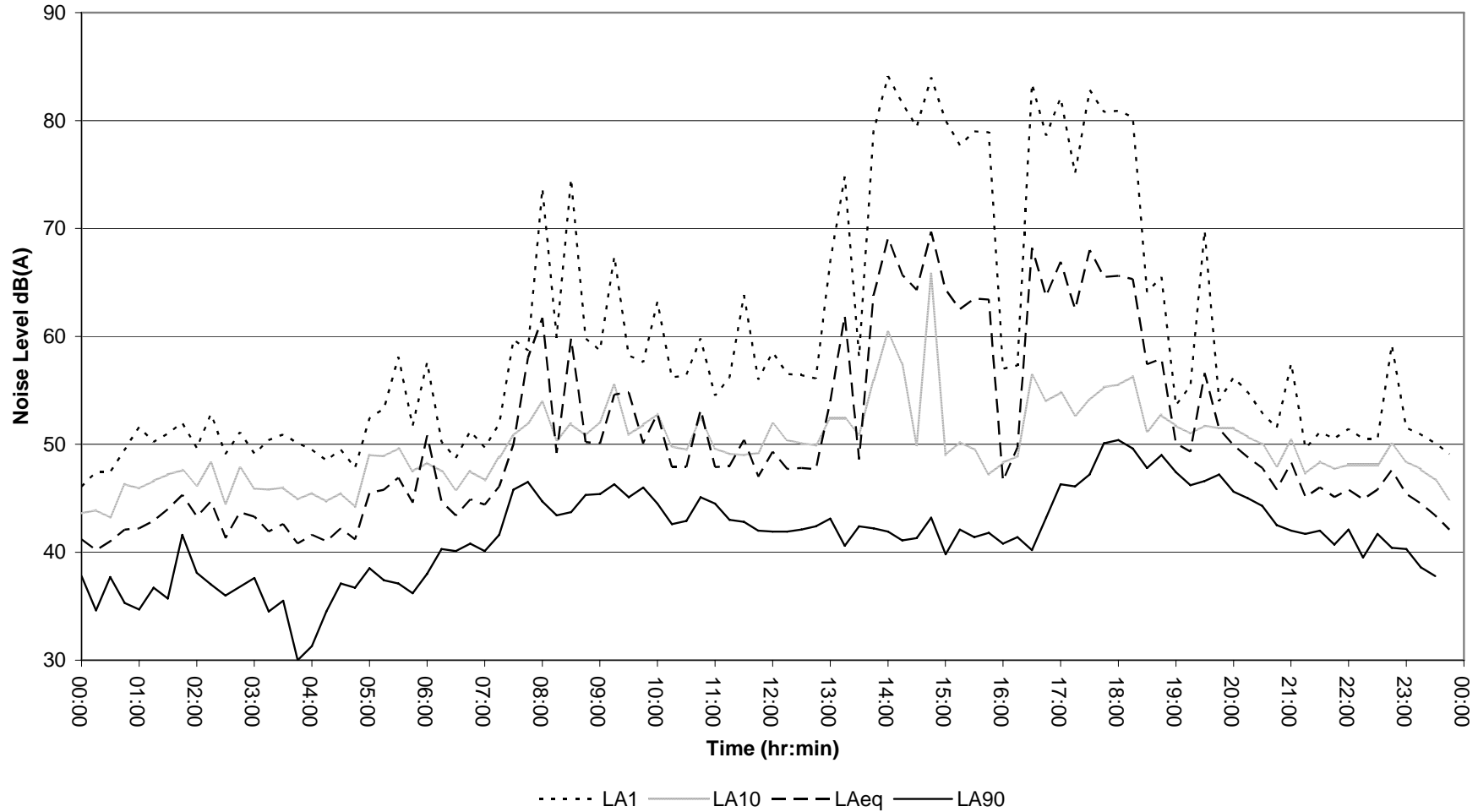


Figure 8 - Daily unattended noise monitoring results for Fairy Bower – Thursday 23 August 2007

Logger F - Fairy Bower - 24/08/2007

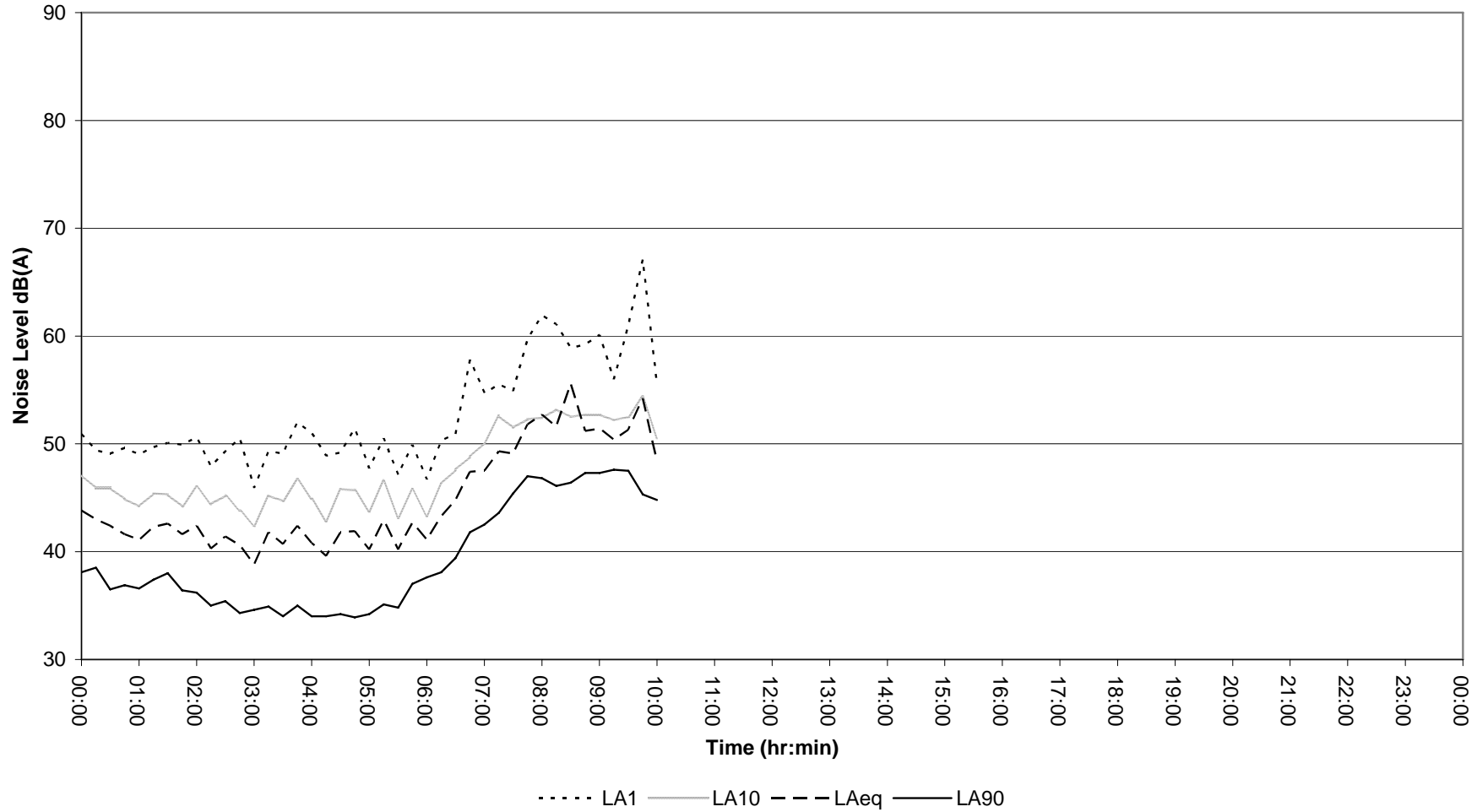


Figure 9 - Daily unattended noise monitoring results for Fairy Bower – Friday 24 August 2007

Logger H - Raglan - 21/08/2007

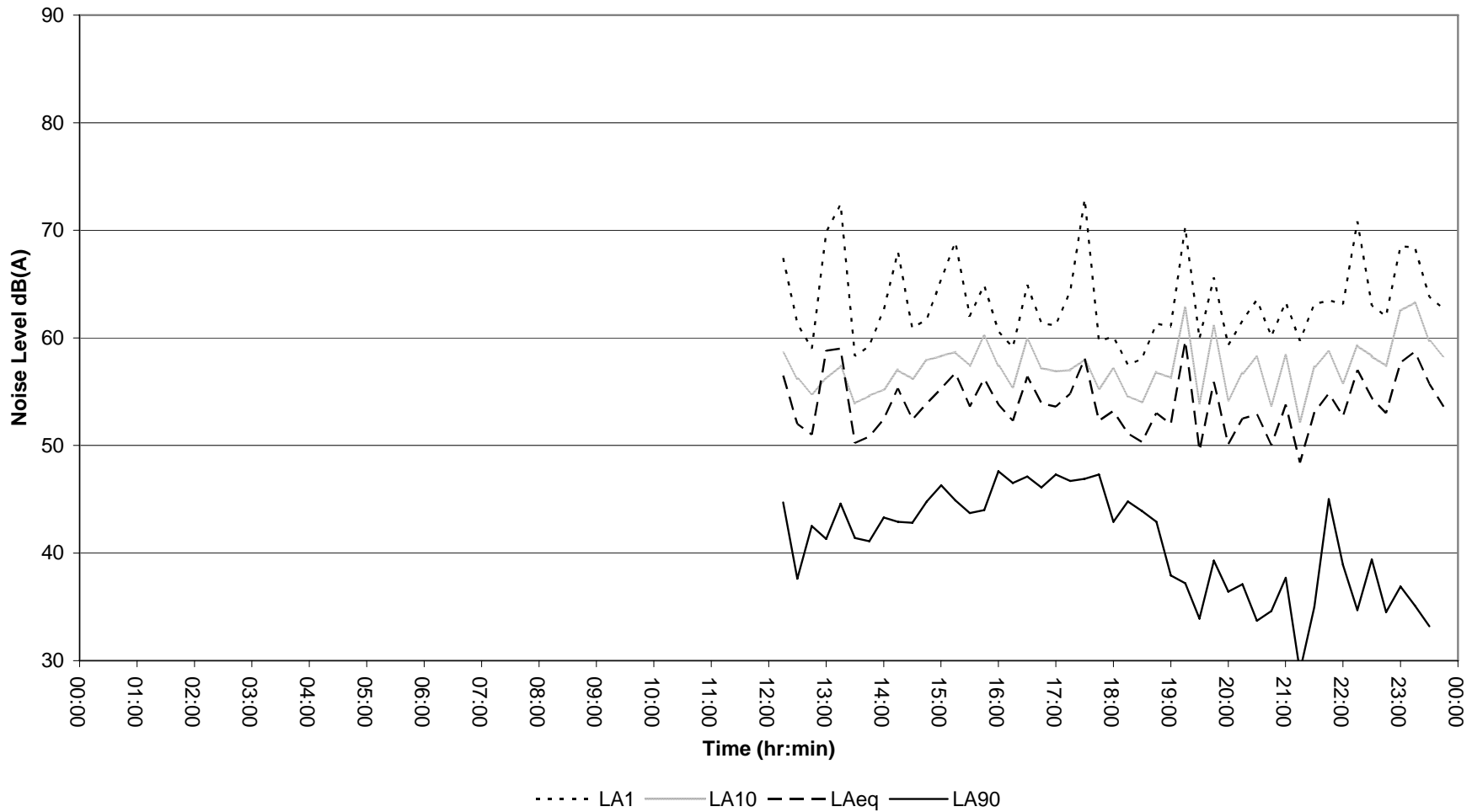


Figure 10 - Daily unattended noise monitoring results for Raglan – Tuesday 21 August 2007

Logger H - Raglan - 22/08/2007

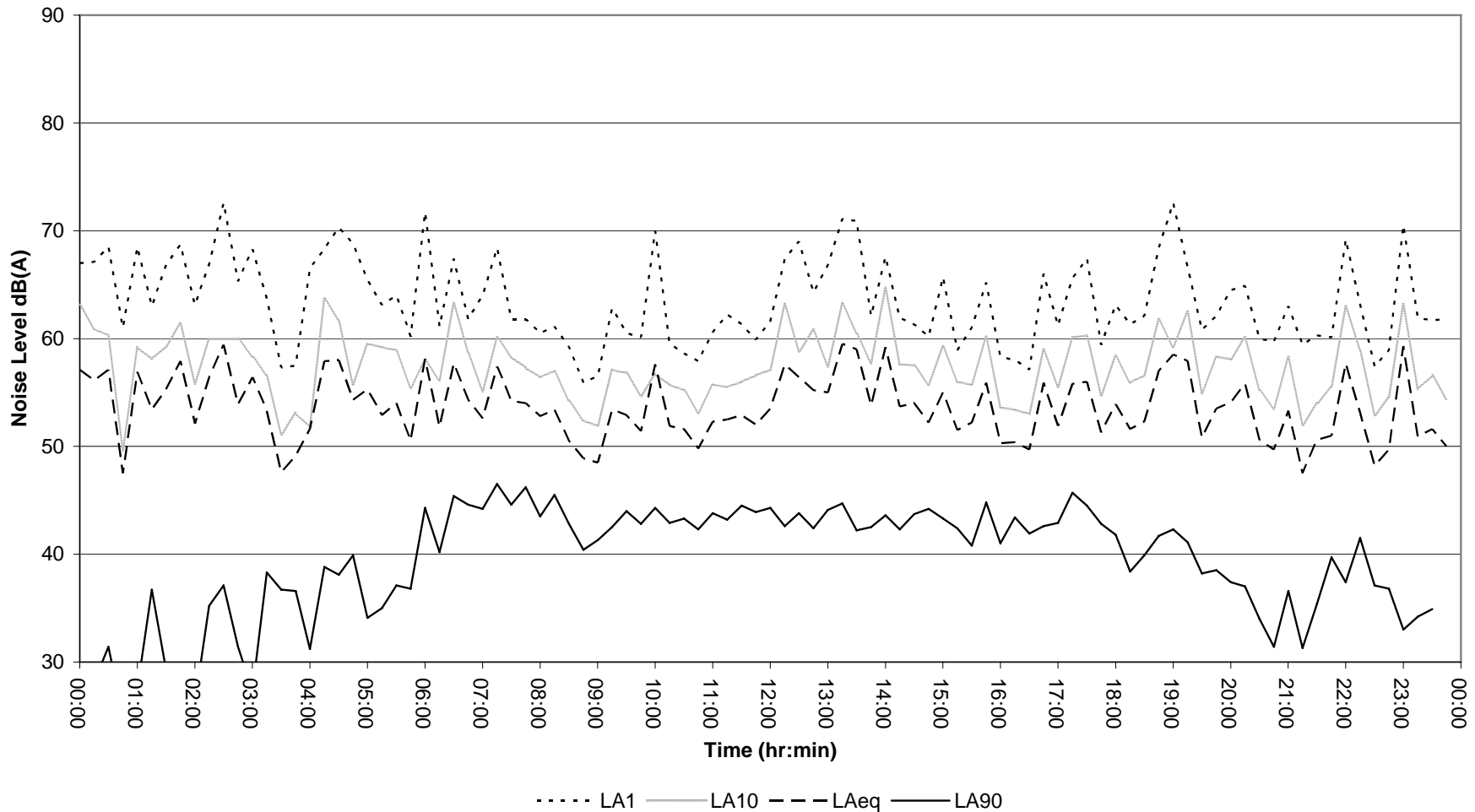


Figure 11 - Daily unattended noise monitoring results for Raglan – Wednesday 22 August 2007

Logger H - Raglan - 23/08/2007

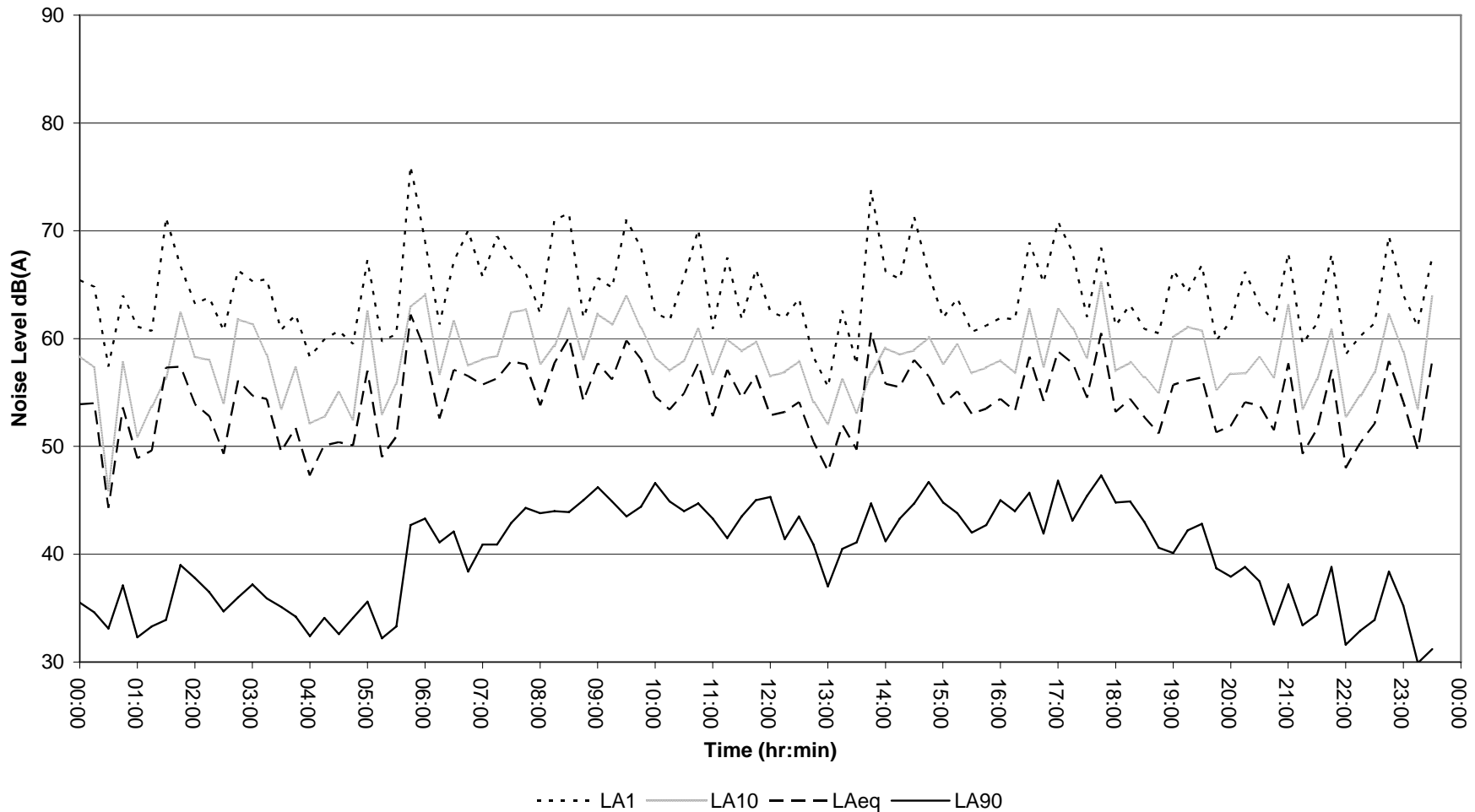


Figure 12 - Daily unattended noise monitoring results for Raglan – Thursday 23 August 2007

Logger H - Raglan - 24/08/2007

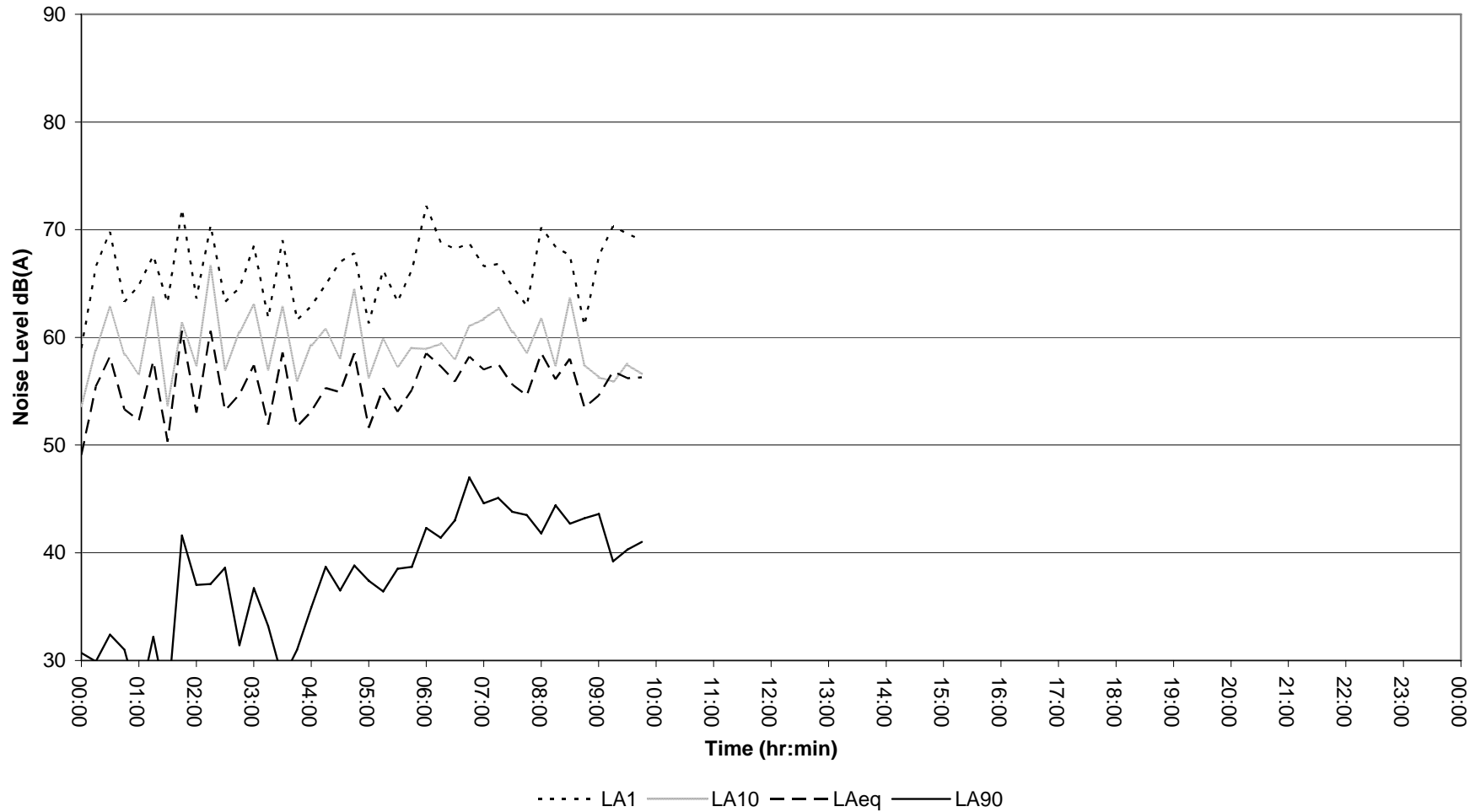


Figure 13 - Daily unattended noise monitoring results for Raglan – Friday 24 August 2007

Logger G - Aldoga - 22/08/2007

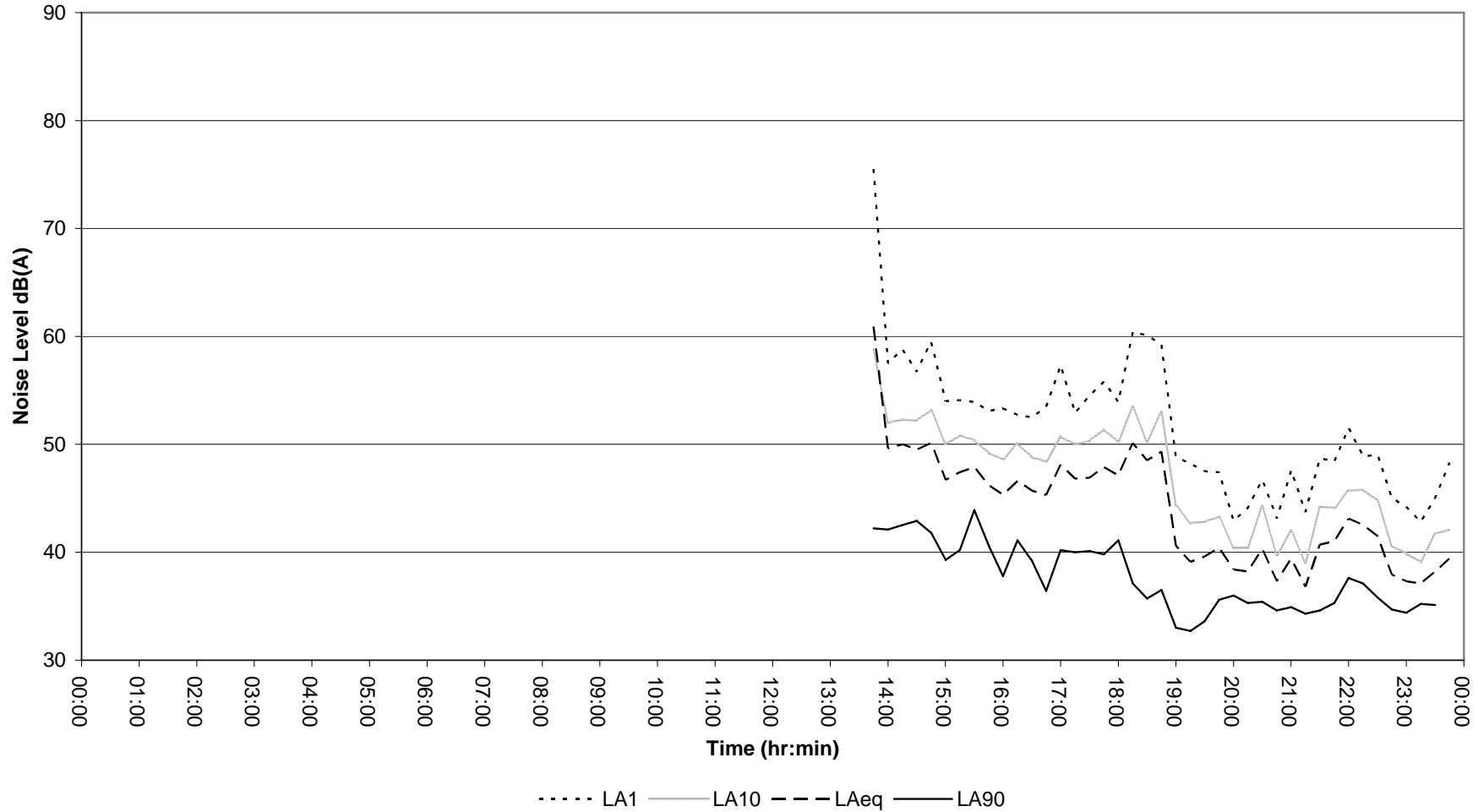


Figure 14 - Daily unattended noise monitoring results for Aldoga – Wednesday 22 August 2007

Logger G - Aldoga - 23/08/2007

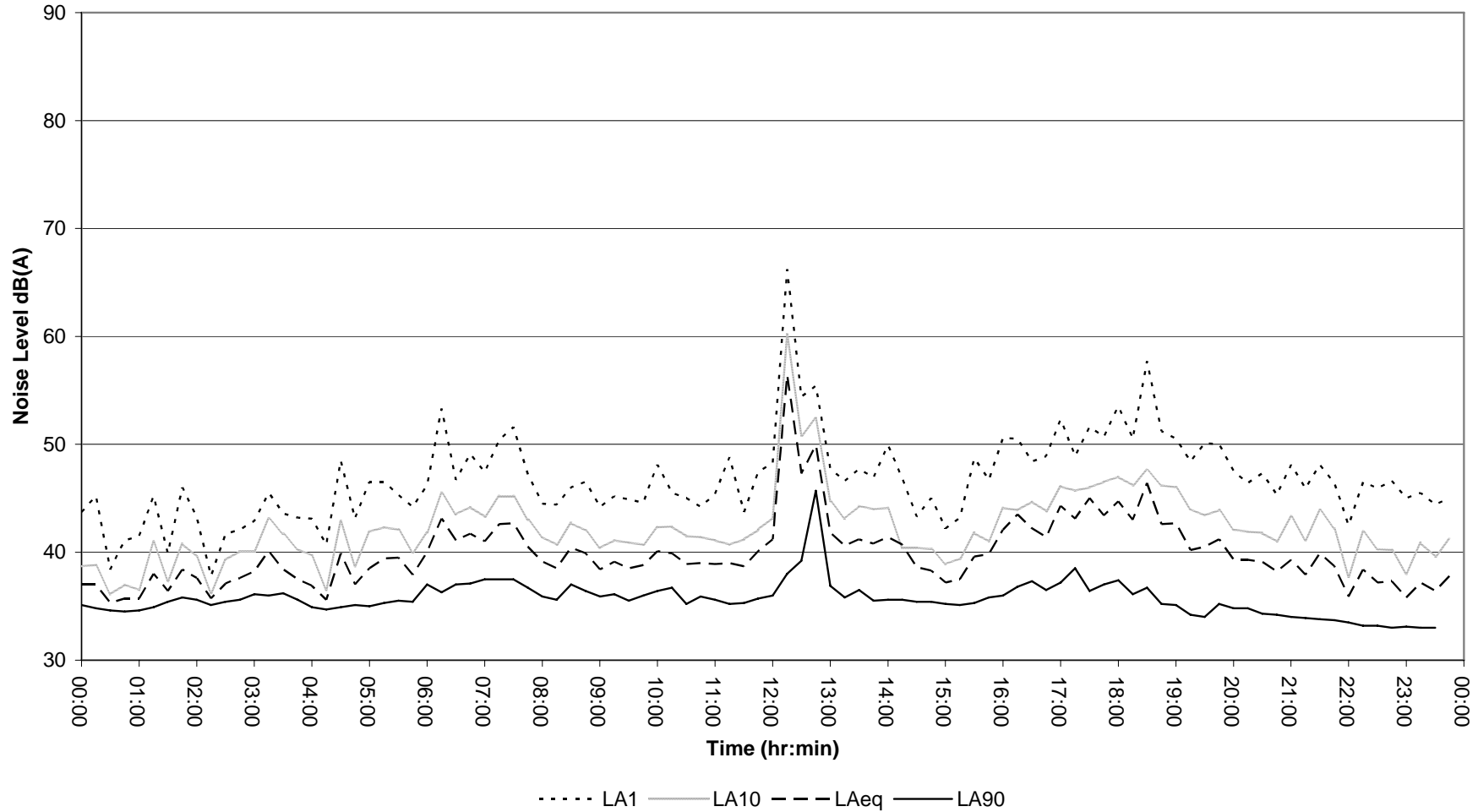


Figure 15 - Daily unattended noise monitoring results for Aldoga – Thursday 23 August 2007

Logger G - Aldoga - 24/08/2007

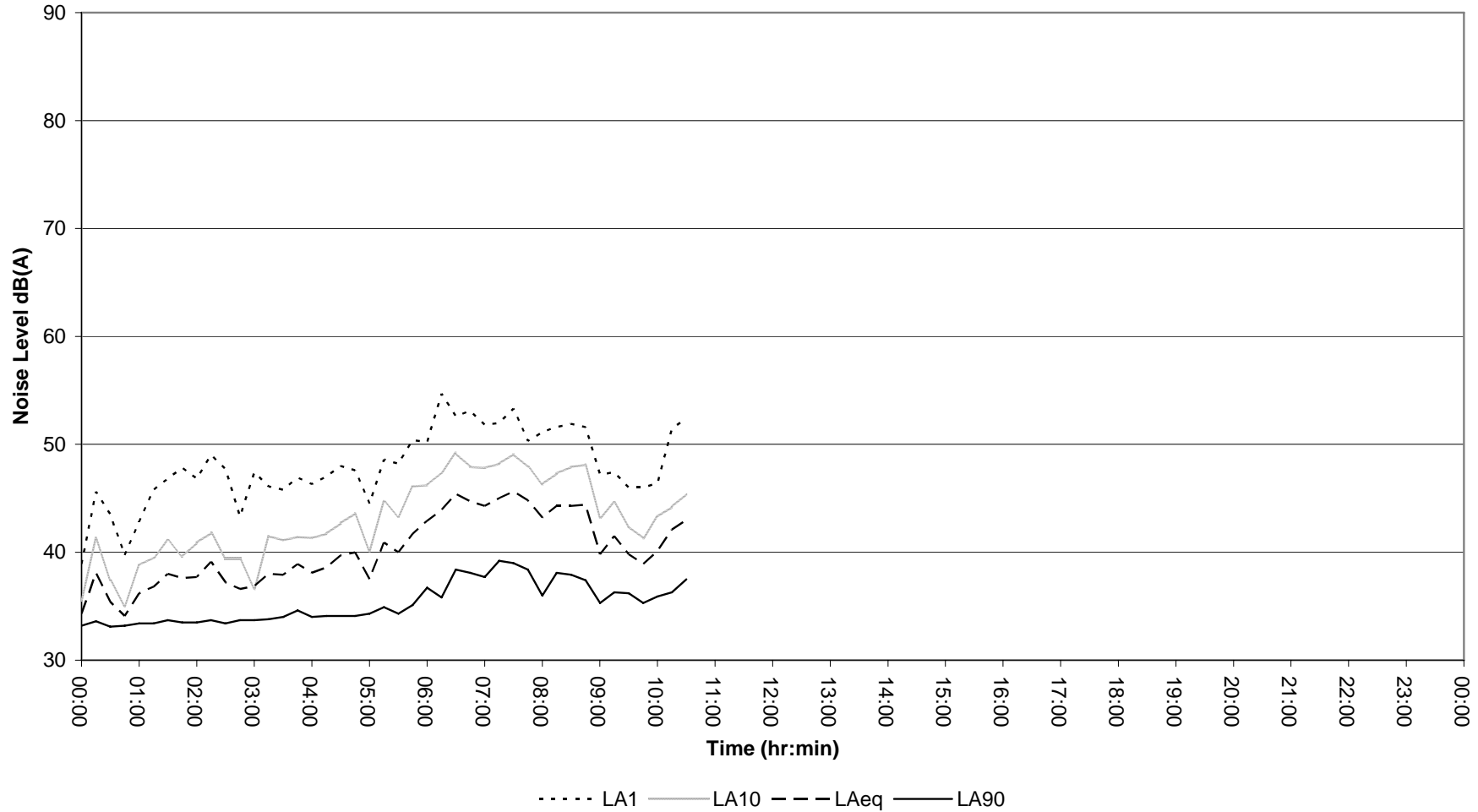


Figure 16 - Daily unattended noise monitoring results for Aldoga – Friday 24 August 2007

Appendix E5.3 Attended Noise Monitoring Results

Table 1 - Attended noise monitoring results, L_{eq}

Location	Time and Date	Description	L _{Aeq}	Sound Pressure Level L _{eq} dB							
				Octave Band Centre Frequency (Hz)							
				63	125	250	500	1000	2000	4000	8000
Laurel Bank	Tuesday 21 August, 16:02	Some distant farm activity related noise, personal water pump noise audible.	40	47	44	36	33	33	33	33	27
Laurel Bank	Wednesday 22 August, 23:32	Night measurement, some wildlife audible.	38	47	42	32	28	29	32	33	27
Yarwun	Thursday 23 August, 16:02	Dominated by road traffic noise, approx. 30% heavy vehicles.	69	83	75	69	65	63	60	58	55
Mt Larcom	Thursday 23 August, 16:21	Dominated by road traffic noise, approx. 20% heavy vehicles.	63	74	65	61	59	59	54	53	47
Port Alma	Thursday 23 August, 16:59	Distant traffic noise from the Bruce Highway, some wildlife noise.	37	51	47	39	37	-	-	-	-
Midgee	Thursday 23 August, 17:18	Dominated by road traffic noise, train noise audible, some wildlife noise.	73	71	71	67	68	71	65	58	51
Gracemere	Thursday 23 August, 17:39	Dominated by road traffic noise.	76	77	78	74	72	73	68	61	56
Aldoga	Friday 24 August, 10:48	Distant industrial noise from aluminium quarry,, some road noise.	46	56	52	42	40	40	39	38	36

Table 2 - Attended noise monitoring results, L₁₀

Location	Time and Date	Description	Sound Pressure Level L ₁₀ dB								
			L _{A10}	Octave Band Centre Frequency (Hz)							
				63	125	250	500	1000	2000	4000	8000
Laurel Bank	Tuesday 21 August, 16:02	Some distant farm activity related noise, personal water pump noise audible.	41	48	44	37	34	35	34	33	29
Laurel Bank	Wednesday 22 August, 23:32	Night measurement, some wildlife audible.	36	49	43	33	26	28	29	28	24
Yarwun	Thursday 23 August, 16:02	Dominated by road traffic noise, approx. 30% heavy vehicles.	71	80	76	71	67	66	62	58	55
Mt Larcom	Thursday 23 August, 16:21	Dominated by road traffic noise, approx. 20% heavy vehicles.	66	74	68	62	61	62	57	53	46
Port Alma	Thursday 23 August, 16:59	Distant traffic noise from the Bruce Highway, some wildlife noise.	45	54	53	48	41	39	33	35	-
Midgee	Thursday 23 August, 17:18	Dominated by road traffic noise, train noise audible, some wildlife noise.	76	73	73	68	69	74	68	60	52
Gracemere	Thursday 23 August, 17:39	Dominated by road traffic noise.	80	80	81	77	75	76	72	64	58
Aldoga	Friday 24 August, 10:48	Distant industrial noise from aluminium quarry,, some road noise.	49	59	55	44	43	43	41	41	40

Table 3 - Attended noise monitoring results, L₉₀

Location	Time and Date	Description	Sound Pressure Level L ₉₀ dB								
			L _{A90}	Octave Band Centre Frequency (Hz)							
				63	125	250	500	1000	2000	4000	8000
Laurel Bank	Tuesday 21 August, 16:02	Some distant farm activity related noise, personal water pump noise audible.	35	43	41	34	29	29	28	26	-
Laurel Bank	Wednesday 22 August, 23:32	Night measurement, some wildlife audible.	31	42	39	30	-	24	25	24	-
Yarwun	Thursday 23 August, 16:02	Dominated by road traffic noise, approx. 30% heavy vehicles.	44	55	52	45	38	39	36	-	-
Mt Larcom	Thursday 23 August, 16:21	Dominated by road traffic noise, approx. 20% heavy vehicles	46	50	46	39	39	43	40	34	-
Port Alma	Thursday 23 August, 16:59	Distant traffic noise from the Bruce Highway, some wildlife noise.	32	47	42	34	32	-	-	-	-
Midgee	Thursday 23 August, 17:18	Dominated by road traffic noise, train noise audible, some wildlife noise.	45	49	46	34	36	42	39	-	-
Gracemere	Thursday 23 August, 17:39	Dominated by road traffic noise.	55	55	57	51	51	52	46	36	-
Aldoga	Friday 24 August, 10:48	Distant industrial noise from aluminium quarry, some road noise.	35	46	40	35	32	32	-	-	-

Appendix E5.4 – DEFRA Construction Noise Levels

Table 1 - Sound power levels used for construction noise predictions (source: DEFRA)

Equipment	Detailed description	dB(A)	Sound power level dB							
			63	125	250	500	1000	2000	4000	8000
Excavator	Standard 35,000 kg tracked excavator	104	112	108	103	102	98	95	92	84
Generator	3 kW/210 kg diesel generator	65	57	71	65	61	60	56	52	44
Drill rig	Standard 100 mm bore drill rig	114	113	121	106	107	108	107	104	102
Breaker	Handheld hydraulic breaker 20 kg/69 bar	121	110	109	115	115	116	114	111	115
Dump truck	28,000 kg articulated dump truck	108	122	104	105	103	104	101	96	91